

Portage County's Local Emergency Planning Committee (LEPC) is working to educate and inform residents on how to report mercury spills, clean-up mercury spills and dispose of mercury products properly. For information call:

LEPC (330)296-0222

Ohio Emergency Management Agency  
(330)297-3607

Portage County Health Department (330)  
296-9919 ext. 116, Jack Madved

To report a spill call 911 or  
Ohio EPA (800)282-9378

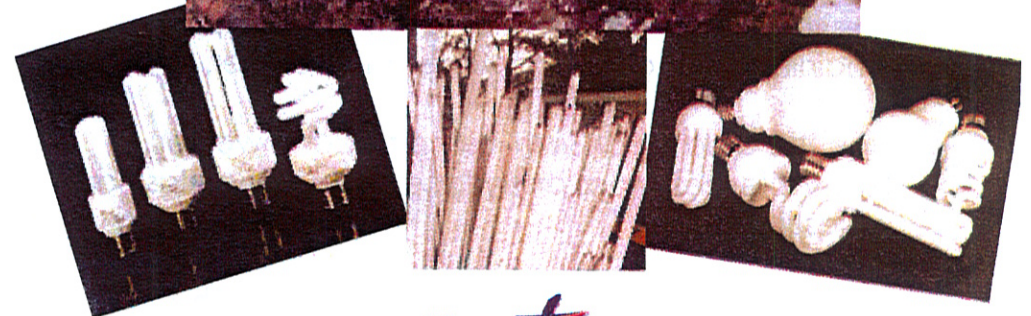
For mercury poisoning call the Poison  
Control Center (800)222-1222



Local Emergency Planning Committee  
(LEPC)



# Guidance for Cleaning up after a Fluorescent Bulb Breaks



Local Emergency Planning Committee  
(LEPC)

## How should I clean up a broken fluorescent bulb?

Because fluorescent bulbs contain a small amount of mercury, EPA recommends the following clean-up and disposal guidelines:

### Before Clean-up-Ventilate the Room

- Have people and pets leave the room, and don't let anyone walk through the breakage area on their way out.
- Open a window and leave the room for 15 minutes or more.
- Shut off the central forced-air heating/air conditioning system, if you have one.



### Clean-Up Steps for Hard Surfaces

- Carefully scoop up glass fragments and powder using stiff paper or cardboard and place them in a glass jar with metal lid (such as a canning jar) or in a sealed plastic bag.
- Use sticky tape, such as duct tape, to pick up any remaining small glass fragments and powder.
- Wipe the area clean with damp paper towels or disposable wet wipes and place them in the glass jar or plastic bag.
- Do not use a vacuum or broom to clean up the broken bulb on hard surfaces.

## Clean-up Steps for Carpeting or Rug

- Carefully pick up glass fragments and place them in a glass jar with metal lid (such as a canning jar) or in a sealed plastic bag.
- Use sticky tape, such as duct tape, to pick up any remaining small glass fragments and powder.
- After all visible materials are removed, vacuum the area where the bulb was broken if needed.
- Remove the vacuum bag (or empty and wipe the canister), and put the bag/debris in a sealed plastic bag.

### Disposal of Clean-up Materials

- Immediately place all cleanup materials outside the building in a trash container or outdoor protected area for the next normal trash pick up.
- Wash your hands after disposing of the jars or plastic bags containing clean-up materials.
- Check with your local or state government about disposal requirements in your area. Some states prohibit trash disposal and require that broken and unbroken mercury-containing bulbs be taken to a local recycling center.

### Future Cleaning of Carpeting or Rug- Ventilate the Room During and After Vacuuming

- The next several times you vacuum, shut off the central forced-air heating/air conditioning system and open a window prior to vacuuming.
- Keep the central heating/air conditioning system shut off and the window open for at least 15 minutes after vacuuming is completed.