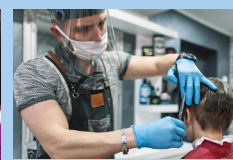




Responsible RestartOhio

**Hair Salons, Day Spas, Nail Salons, Barbershops
Tanning Facilities, Tattoo Services and
Body Piercings**



Employees

Mandatory

- **Ensure minimum of 6 feet between employees, if not possible, install barriers**
 - Social distancing will apply with exception that the distance between the client and employee may be less than six feet
- Businesses must allow all customers, patrons, visitors, contractors, vendors and similar individuals to use facial coverings, except for specifically documented legal, life, health or safety considerations and limited documented security considerations.
- Businesses must require all employees to wear facial coverings, except for one of the following reasons:
 - Facial coverings in the work setting are prohibited by law or regulation
 - Facial coverings are in violation of documented industry standards
 - Facial coverings are not advisable for health reasons
 - Facial coverings are in violation of the business' documented safety policies
 - Facial coverings are not required when the employee works alone in an assigned work area
 - There is a functional (practical) reason for an employee not to wear a facial covering in the workplace.

(Businesses must provide written justification to local health officials, upon request, explaining why an employee is not required to wear a facial covering in the workplace. At minimum, facial coverings (masks) should be cloth/fabric and cover an individual's nose, mouth, and chin.)
- Employees must perform daily symptom assessment*
- Require employees to stay home if symptomatic
- Require regular handwashing by employees
- Place hand sanitizers in high-contact locations
- Clean high-touch items after each use (e.g. carts, baskets)
- Wear gloves and dispose of gloves in between tasks in accordance with Centers for Disease Control and Prevention (CDC) glove removal guidance; if gloves cannot be worn, wash hands in between tasks in accordance with CDC handwashing guidance
- Dispose of single-use materials between clients
- Maintain accurate appointment and walk-in records including date and time of service, name of client, and contact information to assist in contact tracing
- Both oral and nose piercings are prohibited at this juncture given the risk of respiratory droplet transmission
- Continue to follow all guidelines in existing ORC and OAC for individual profession
 - OAC 4713
 - Please re-review OAC 4713-15-01, 02, 03, 13, & 15
 - These sections provide pointed rules on cleaning, disinfecting, and sanitation
 - RC 4709 and RC 4713
 - These Ohio Revised Code sections are the governing laws for Cosmetologists and Barbers, and set the overarching standards for requirements of sanitation and cleanliness in a licensee's business
 - RC 3730
 - OAC 3701-9
 - These laws and rules govern tattoo and body piercings and include sterilization and disinfection procedures.
 - Additionally, the "Laws & Rules" tab on the Cosmetology and Barber Board's website provides links and information pertaining to the rules and regulations of the industry
 - www.cos.ohio.gov

Recommended Best Practices

- Group employees by shift to reduce exposure
- Wear eye protection when providing services in close proximity to client, when possible
- Launder work clothing daily and shower immediately upon returning home from the establishment

* Per the CDC, symptoms include cough, shortness of breath, difficulty breathing, fever, chills, repeated shaking with chills, muscle pain, headaches, sore throat, and new loss of taste or smell.

Mandatory

Customers & Guests

- **Ensure minimum 6 feet between customers**
 - Social distancing will apply with exception that the distance between the client and employee may be less than six feet
- Specify hours for at-risk populations (e.g. elderly)
- Place hand sanitizers in high-contact locations
- Ask customers and guests not to enter if symptomatic
- Stagger entry of customers and guests
- Only clients will be allowed in the establishment for their service; unless client must be accompanied by a caregiver

Recommended Best Practices

- Consider having customers wear face coverings at all times.
- Health questionnaire for symptoms at entry point
- Provide face coverings upon entry
- Where possible, accept customers by appointment only
- Increase availability for curbside pickup
- Consider suspending return policies
- Schedule appointments with adequate time in between appointments to reduce the number of clients in the establishment
- Ask clients to wait outside in their vehicle or, if not possible, at the entrance of the business with at least six feet between clients until their scheduled appointment

Physical Spaces

- **Ensure minimum of 6 feet between people, if not possible, install barriers**
 - Social distancing will apply with exception that the distance between the client and employee may be less than six feet
- Post social distancing signage and disinfect high-contact surfaces hourly
- Clean merchandise before stocking if possible
- Establish maximum capacity
- Discontinue all self-service refreshments
- Discontinue client use of product testers; switch to employee-only product handling
- Clean chairs and equipment before and after each use
- Discard magazines and other non-essential items in the waiting area that cannot be disinfected
- Self-service buffets and product samples are prohibited, but self-service beverage is permitted.

- Close once a week for deep cleaning
- Maximize available checkout space to promote social distancing (e.g., space customer lines with floor markers, use alternate registers)
- Use contact-less payments where possible
- Increase capacity for delivery and curbside pickup
- Post visible and appropriate signage to communicate to the client that thorough sanitation procedures are in place, and that service will not be provided to clients exhibiting symptoms of COVID-19. Signage to be created, in consultation with the Ohio Department of Health, and distributed to licensees by the Cosmetology and Barber Board

Confirmed Cases

- Immediately isolate and seek medical care for any individual who develops symptoms while at work
- Contact the local health department about suspected cases or exposures
- Shutdown area for deep sanitation if possible

- Work with local health department to identify potentially infected or exposed individuals to help facilitate effective contact tracing/ notifications
- Once testing is readily available, test all suspected infections or exposures
- Following testing, contact local health department to initiate appropriate care and tracing