

T.H. 236-B  
BRYANT

C.H. 299-A  
PARKMAN

N 94907  
E 89788

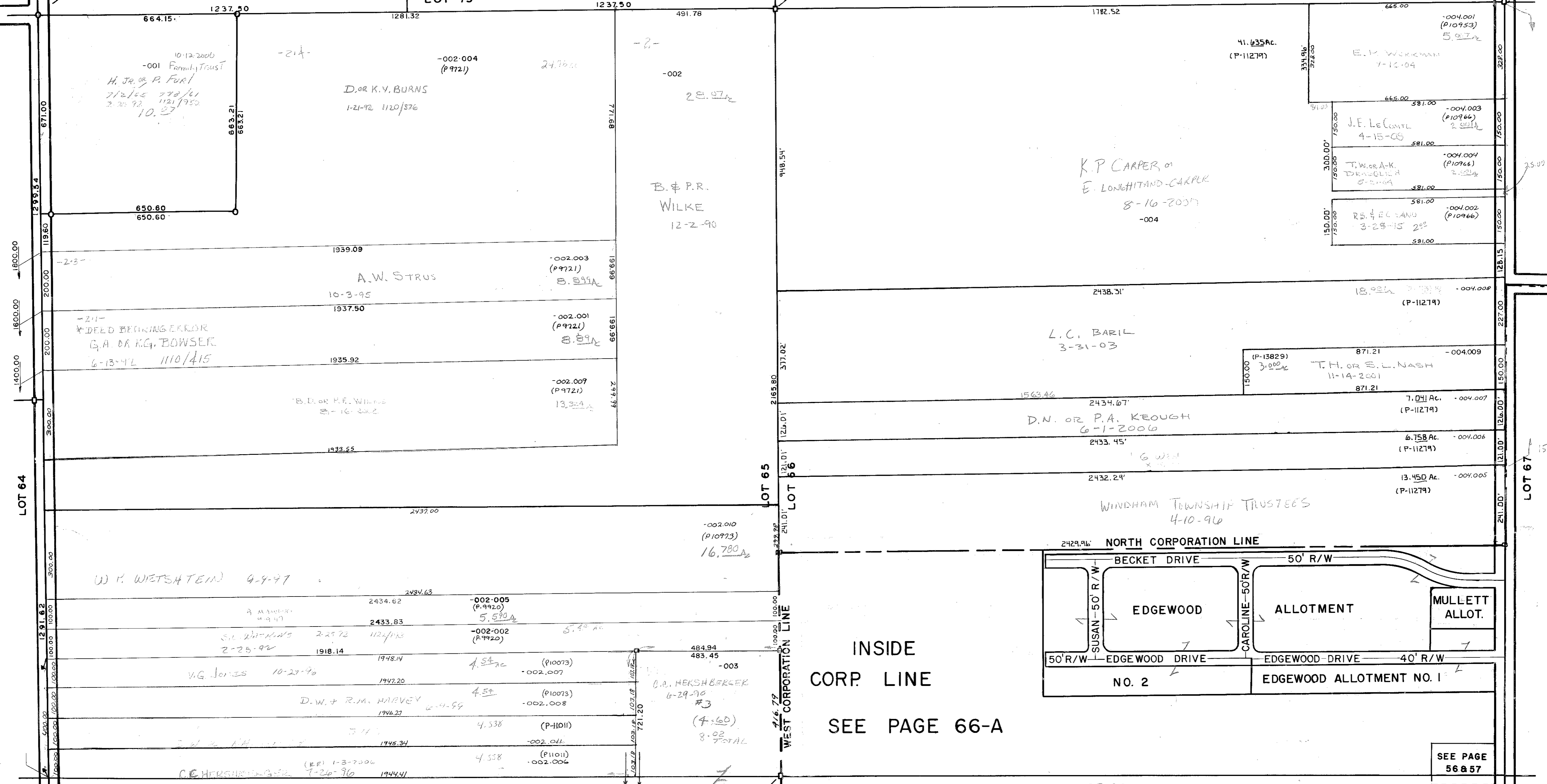
N 94876  
E 92233

N 94899  
E 94652

LOT 75

LOT 76

LOT 67



N 92339  
E 89855

T.H. 236-A  
BRYANT  
60' R/W

N 92349  
E 92292

N 92380  
E 94690

C.H. 299-A  
PARKMAN  
66' R/W