

PORTAGE LINE
CH. 7-A

LOT 48

MARTIN 50' R/W
T.H. 8-A

1-1 K.D. & C.L. REBERS 4-4-2000 52 ft

N 11420
E 75

N 11410
E 2829

SUMMIT COUNTY

PORTAGE LINE
CH. 7-A

LOT 50

SOUTH R/W ESTABLISHED IN PLAT VOL. 29 PG. 10
COMMON PLEAS CASE NO. 76CV0123

37-049-00-00-000.000
BOLENDER T.H. 5-A
SUFFIELD TWP. 49

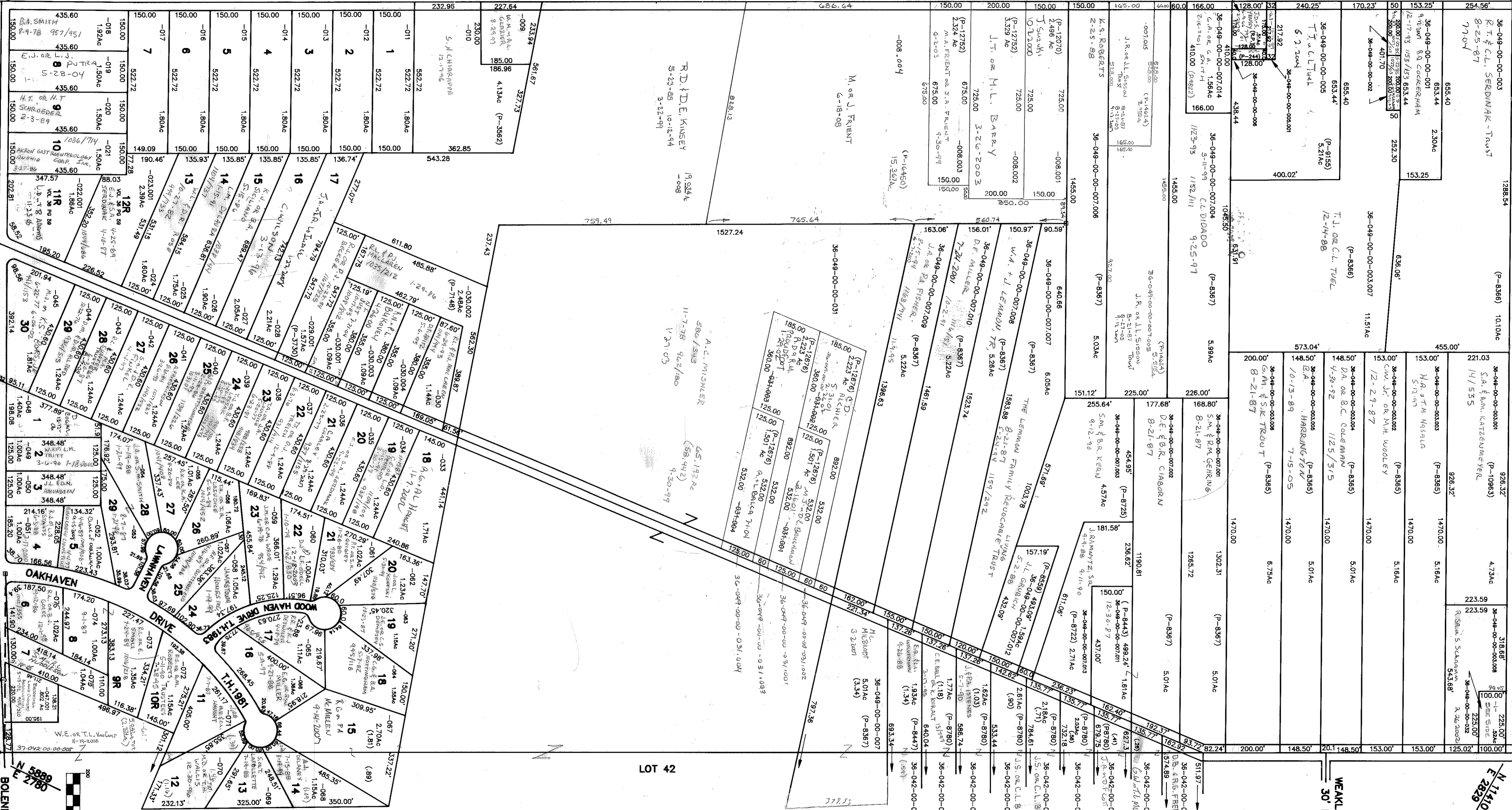
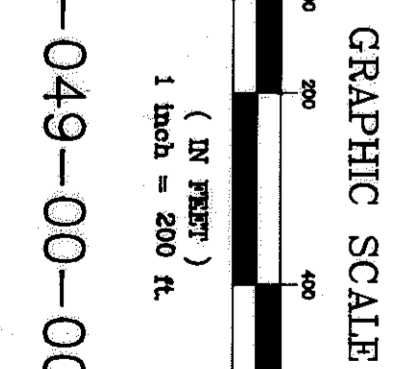
BROOKHILL ALLOTMENT
VOL. 22 PG. 48-49
LOTS 1-30

BROOKHILL DEVELOPMENT CORP. OWNER OF UNPAID

OWNERS OF UNPAID
LOTS:
C.E. OR E.M. BERGER 912/1111
T.E. OR K.A. BERGER 912/1094
T.E. OR E.M. BERGER 78/2208

N 5886
E 36

N 5886
E 278



Lot #	Owner	Plat #	Acreage
1	R.D. KINSEY	5-23-68	1.80Ac
2	R.D. KINSEY	5-23-68	1.80Ac
3	R.D. KINSEY	5-23-68	1.80Ac
4	R.D. KINSEY	5-23-68	1.80Ac
5	R.D. KINSEY	5-23-68	1.80Ac
6	R.D. KINSEY	5-23-68	1.80Ac
7	R.D. KINSEY	5-23-68	1.80Ac
8	R.D. KINSEY	5-23-68	1.80Ac
9	R.D. KINSEY	5-23-68	1.80Ac
10	R.D. KINSEY	5-23-68	1.80Ac
11	R.D. KINSEY	5-23-68	1.80Ac
12	R.D. KINSEY	5-23-68	1.80Ac
13	R.D. KINSEY	5-23-68	1.80Ac
14	R.D. KINSEY	5-23-68	1.80Ac
15	R.D. KINSEY	5-23-68	1.80Ac
16	R.D. KINSEY	5-23-68	1.80Ac
17	R.D. KINSEY	5-23-68	1.80Ac
18	R.D. KINSEY	5-23-68	1.80Ac
19	R.D. KINSEY	5-23-68	1.80Ac
20	R.D. KINSEY	5-23-68	1.80Ac
21	R.D. KINSEY	5-23-68	1.80Ac
22	R.D. KINSEY	5-23-68	1.80Ac
23	R.D. KINSEY	5-23-68	1.80Ac
24	R.D. KINSEY	5-23-68	1.80Ac
25	R.D. KINSEY	5-23-68	1.80Ac
26	R.D. KINSEY	5-23-68	1.80Ac
27	R.D. KINSEY	5-23-68	1.80Ac
28	R.D. KINSEY	5-23-68	1.80Ac
29	R.D. KINSEY	5-23-68	1.80Ac
30	R.D. KINSEY	5-23-68	1.80Ac