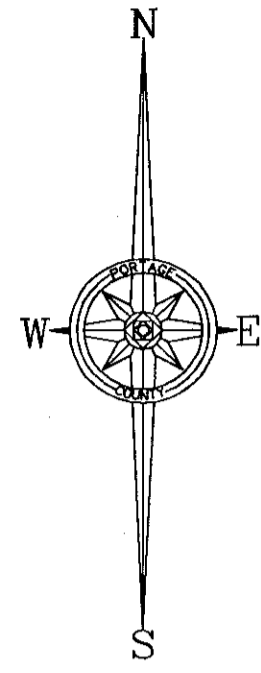


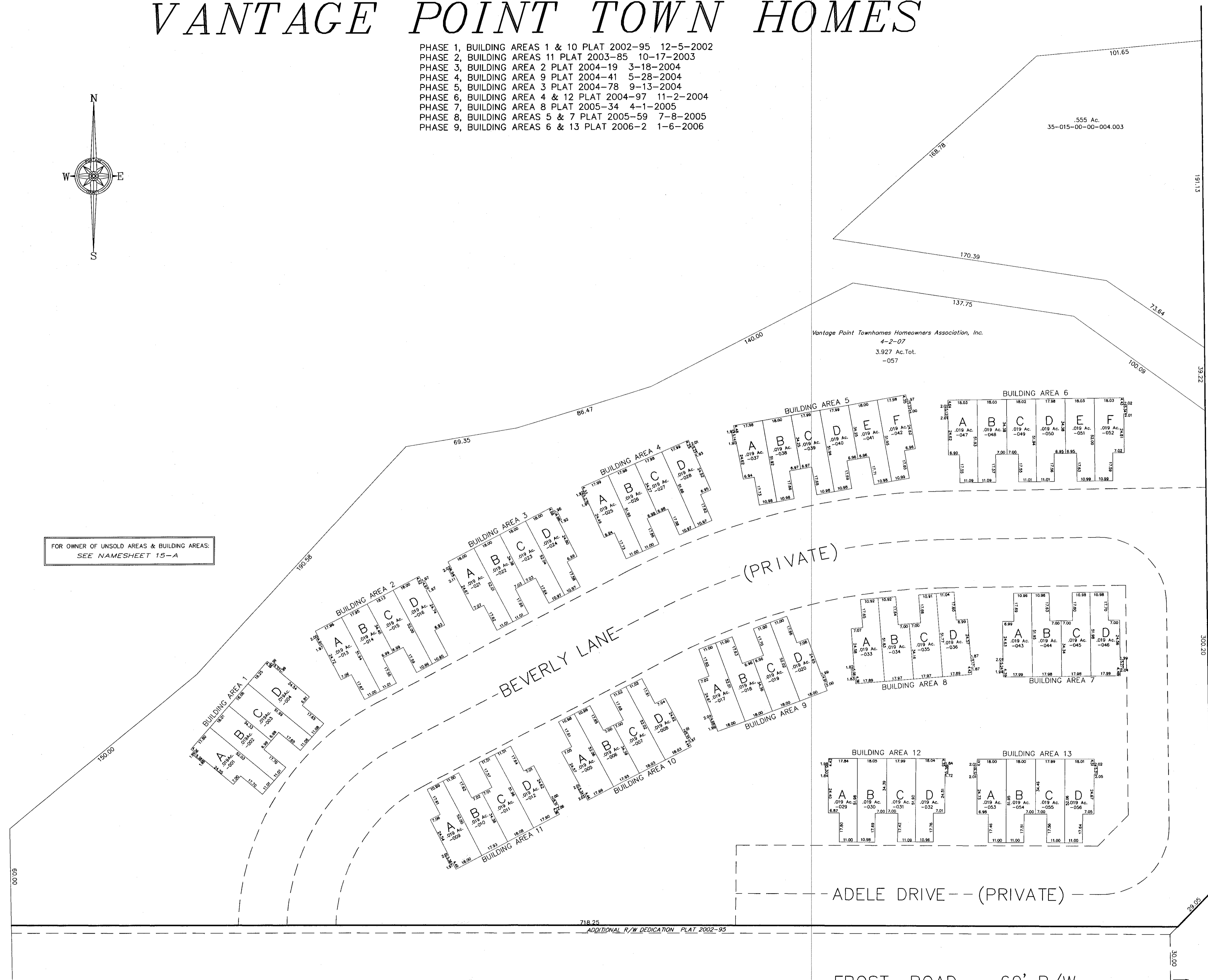
# VANTAGE POINT TOWN HOMES

PHASE 1, BUILDING AREAS 1 & 10 PLAT 2002-95 12-5-2002  
 PHASE 2, BUILDING AREAS 11 PLAT 2003-85 10-17-2003  
 PHASE 3, BUILDING AREA 2 PLAT 2004-19 3-18-2004  
 PHASE 4, BUILDING AREA 9 PLAT 2004-41 5-28-2004  
 PHASE 5, BUILDING AREA 3 PLAT 2004-78 9-13-2004  
 PHASE 6, BUILDING AREA 4 & 12 PLAT 2004-97 11-2-2004  
 PHASE 7, BUILDING AREA 8 PLAT 2005-34 4-1-2005  
 PHASE 8, BUILDING AREAS 5 & 7 PLAT 2005-59 7-8-2005  
 PHASE 9, BUILDING AREAS 6 & 13 PLAT 2006-2 1-6-2006



FOR OWNER OF UNSOLD AREAS & BUILDING AREAS:  
 SEE NAMESHEET 15-A

Vantage Point Townhomes Homeowners Association, Inc.  
 4-2-07  
 3.927 Ac. Tot.  
 -057

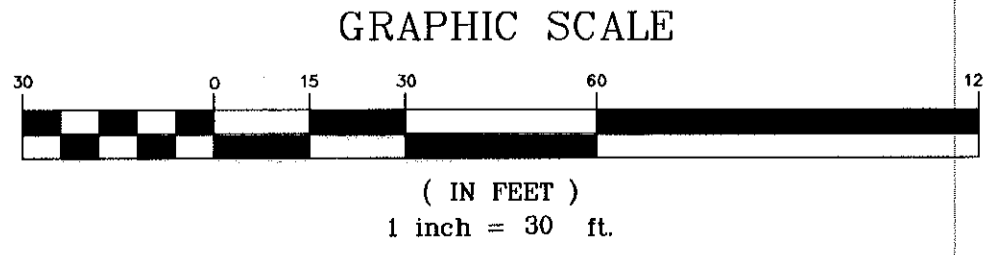


STATE-ROUTE-43  
 CLEVELAND-CANTON-ROAD

ADDITIONAL R/W DEDICATION PLAT 2002-95

FILE NO. 3501510

SUNNY LANE



35-015-10-00-000.000  
 STREETSBORO CITY

15-A