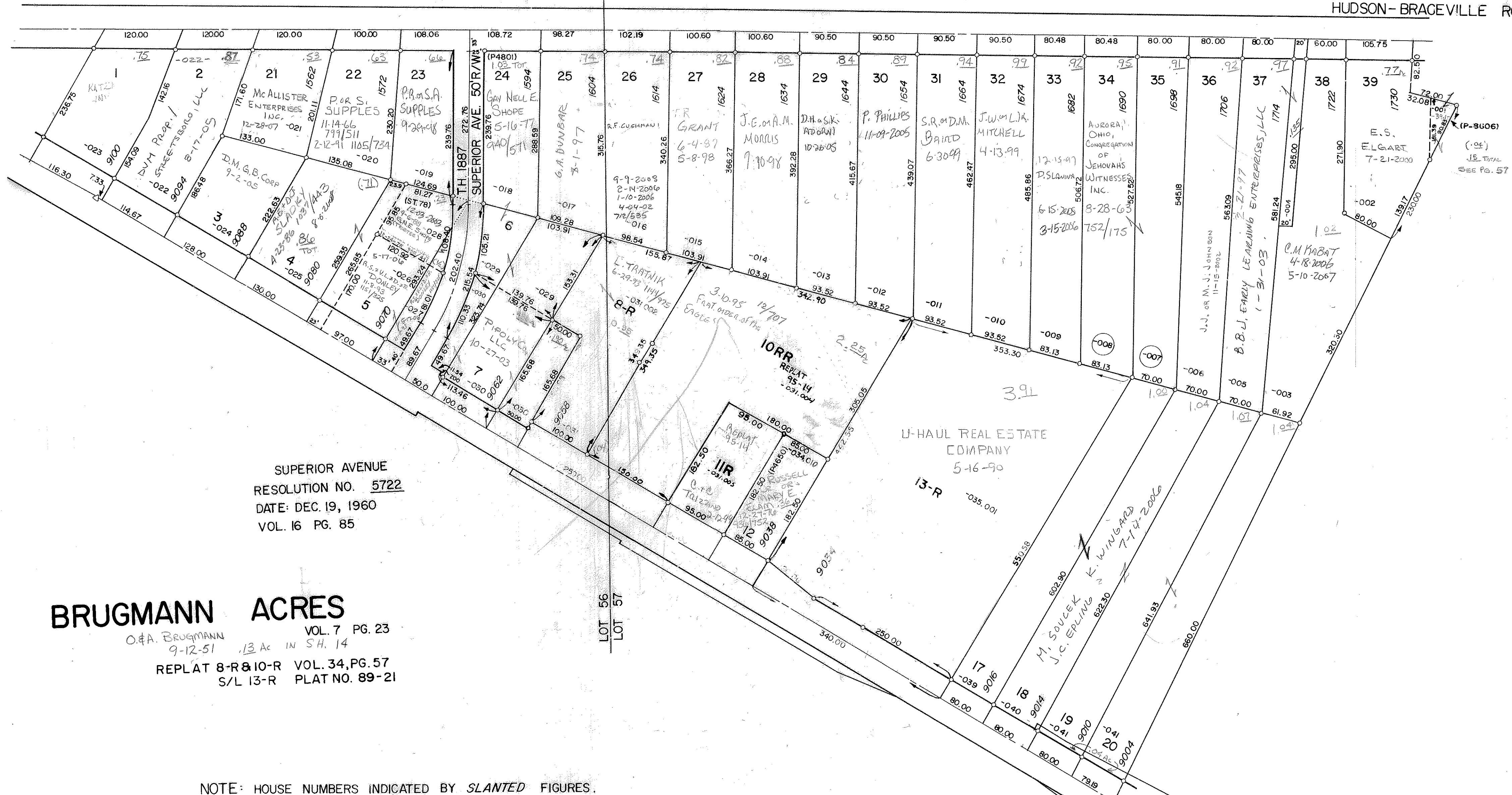


S.R. 303 66' R/W
HUDSON-BRACEVILLE ROAD



SUPERIOR AVENUE
RESOLUTION NO. 5722
DATE: DEC. 19, 1960
VOL. 16 PG. 85

BRUGMANN ACRES
O.F.A. BRUGMANN
9-12-51 13 Ac IN S.H. 14
VOL. 7 PG. 23
REPLAT 8-R & 10-R VOL. 34, PG. 57
S/L 13-R PLAT NO. 89-21

NOTE: HOUSE NUMBERS INDICATED BY *SLANTED* FIGURES.
EXAMPLE: 9009

S.R. 14 66' R/W
CLEVELAND- EAST LIVERPOOL
ROAD