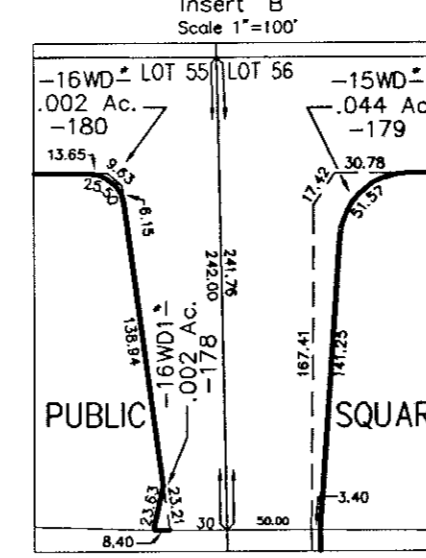
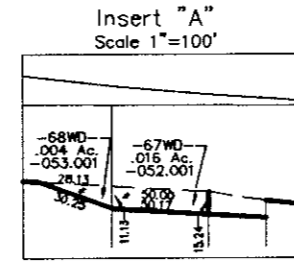
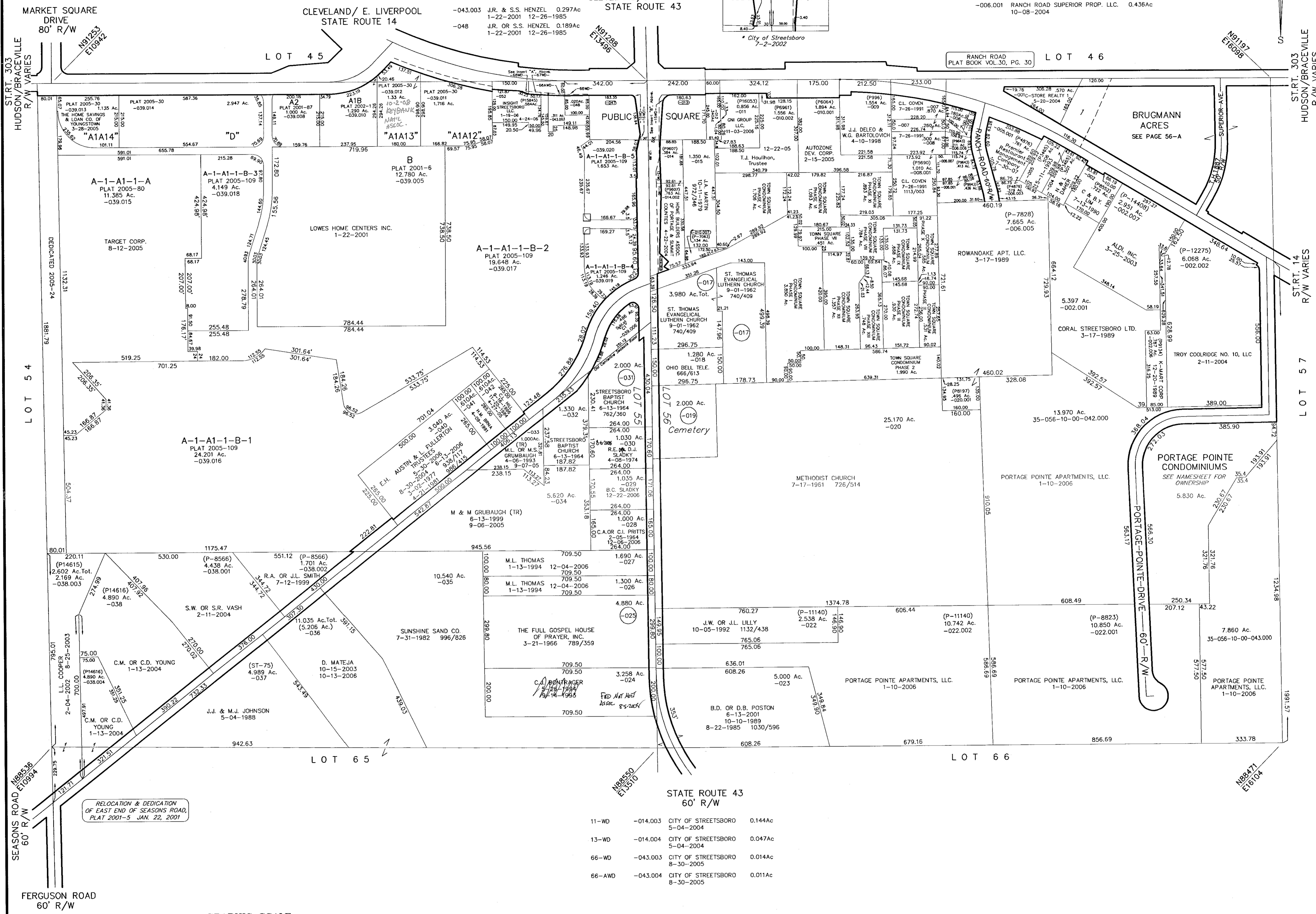
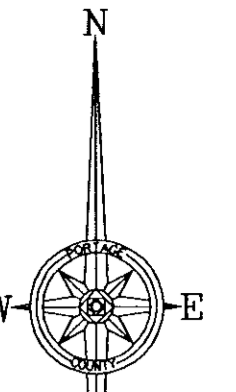


STREETSBORO CROSSING

OWNER OF UNSOLD LOTS: STREETSBORO CROSSING PROPERTIES LTD. 1-22-2001
 SUBLOTS A,B & C, PLAT 2001-6 1-22-2001
 SUBLOT A-2, PLAT 2001-87 9-18-2001
 SUBLOT A1A & A1B, PLAT 2002-1 1-9-2002
 SUBLOT A1A1, C1, DEDICATION & VACATION PLAT 2005-24 3-18-2005
 SUBLOT A1A11, D, A1A13 & A1A12 PLAT 2005-30 3-28-2005
 SUBLOT A1A11B, A1A11A PLAT 2005-80 8-12-2005
 SUBLOT A1A11B3, A1A11B1, A1A11B2, A1A11B4, A1A11B5 PLAT 2005-109 10-11-2005



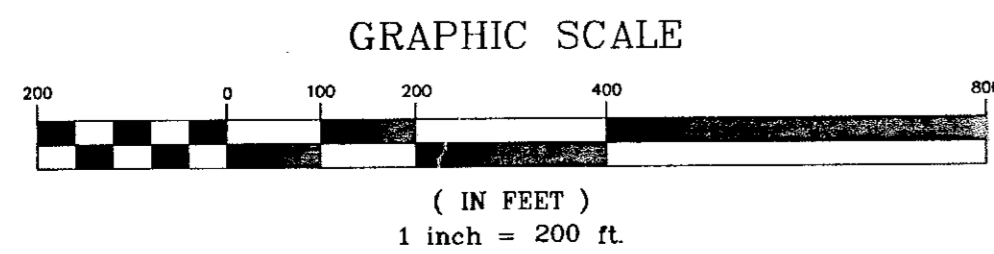
- 006 CONCORD PROPERTIES PARTNERS CO. LTD. 0.180Ac 2-10-2004
- 006.006 RANCH ROAD SUPERIOR PROP. LLC. 0.211Ac 10-08-2004
- 006.007 RANCH ROAD SUPERIOR PROP. LLC. 0.413Ac 10-08-2004
- 006.001 RANCH ROAD SUPERIOR PROP. LLC. 0.436Ac 10-08-2004



- 012 TOWN & COUNTRY INVESTMENTS 0.340Ac 7-08-2002
- 043.003 J.R. & S.S. HENZEL 0.297Ac 1-22-2001 12-26-1985
- 048 J.R. OR S.S. HENZEL 0.189Ac 1-22-2001 12-26-1985

RELOCATION & DEDICATION OF EAST END OF SEASONS ROAD, PLAT 2001-5 JAN. 22, 2001

- 11-WD -014.003 CITY OF STREETSBORO 0.144Ac 5-04-2004
- 13-WD -014.004 CITY OF STREETSBORO 0.047Ac 5-04-2004
- 66-WD -043.003 CITY OF STREETSBORO 0.014Ac 8-30-2005
- 66-AWD -043.004 CITY OF STREETSBORO 0.011Ac 8-30-2005



35-055-00-00-000.000
 STREETSBORO CITY

55&56

FILE NAME: 3505500