

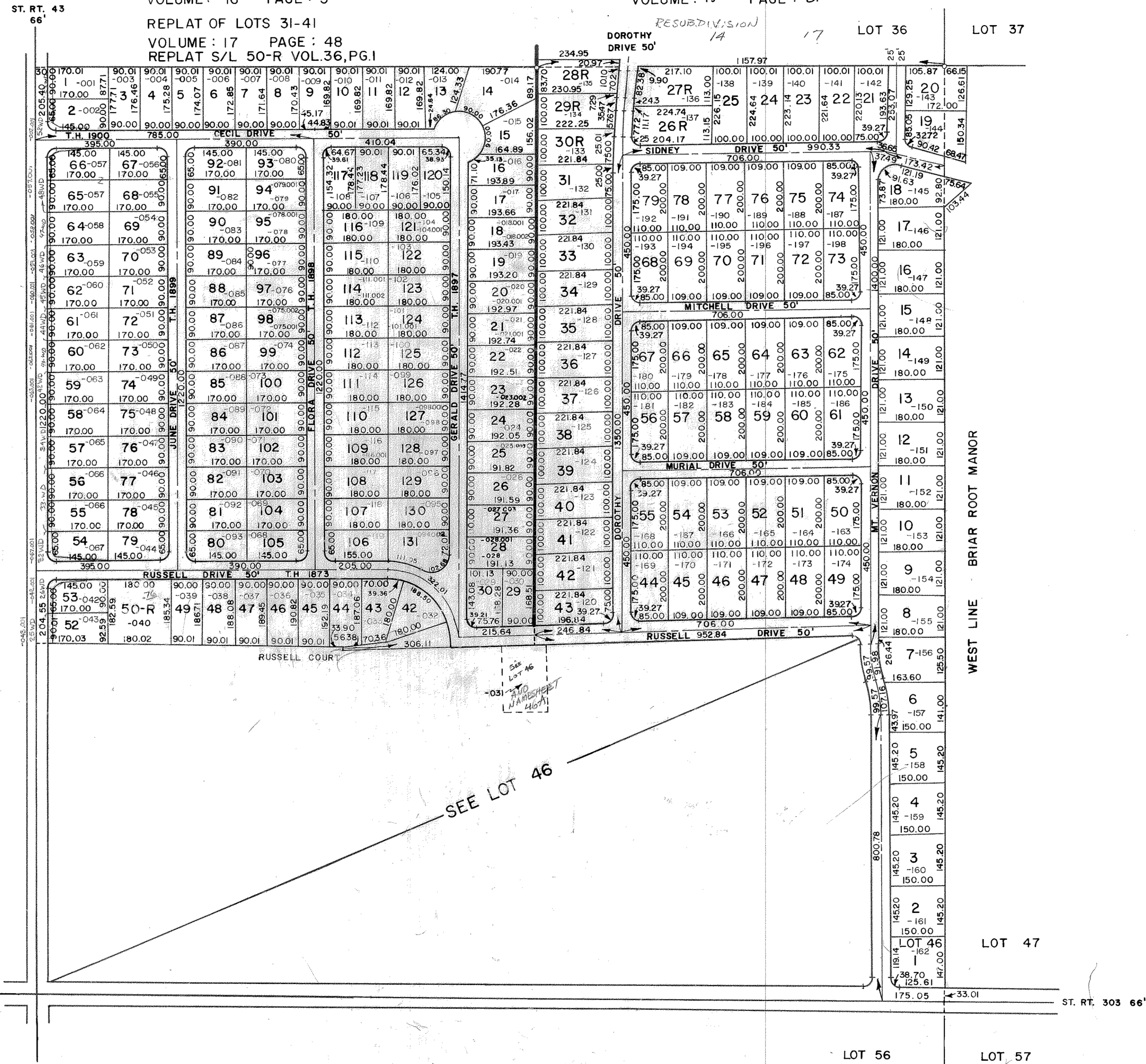
- 48WD CITY OF STREETSBORO 6-12-2002 .038A
- 47WD CITY OF STREETSBORO 11-5-2002 .011A
- 46WD CITY OF STREETSBORO 5-20-2002 .011A
- 45WD CITY OF STREETSBORO 5-20-2002 .011A
- 44WD CITY OF STREETSBORO 6-19-2002 .011A
- 43WD CITY OF STREETSBORO 8-5-2002 .011A
- 42WD CITY OF STREETSBORO 5-20-2002 .011A
- 34WD CITY OF STREETSBORO 6-20-2002 .023A
- 32WD CITY OF STREETSBORO 10-2-2002 .023A
- 32WD CITY OF STREETSBORO 5-20-2002 .033A - .066.001
- 26WD CITY OF STREETSBORO 6-6-2002 .033A
- 25WD CITY OF STREETSBORO 6-6-2002 .022A
- 53WD CITY OF STREETSBORO 7-9-2002 0.031A - SEE .004.001
- 52WD CITY OF STREETSBORO 9-20-2002 .033A

BRUGMAN SUBDIVISION
OWNER: BRIAR ROOT ESTATES, INC.

SMITHFIELD ESTATES
OWNER: 50 STAR HOMES

VOLUME: 16 PAGE: 5
REPLAT OF LOTS 31-41
VOLUME: 17 PAGE: 48
REPLAT S/L 50-R VOL.36, PG.1

VOLUME: 13 PAGE: 31
RESUBDIVISION 1A 17 LOT 36 LOT 37



35-046-10-00-000.000
STREETSBORO CITY
SCALE 1" = 200'

46A