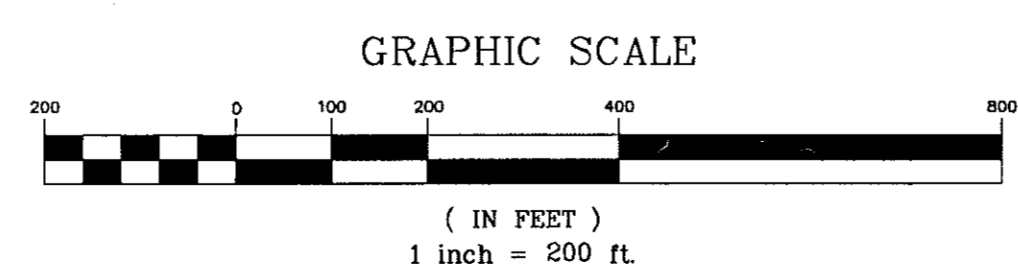
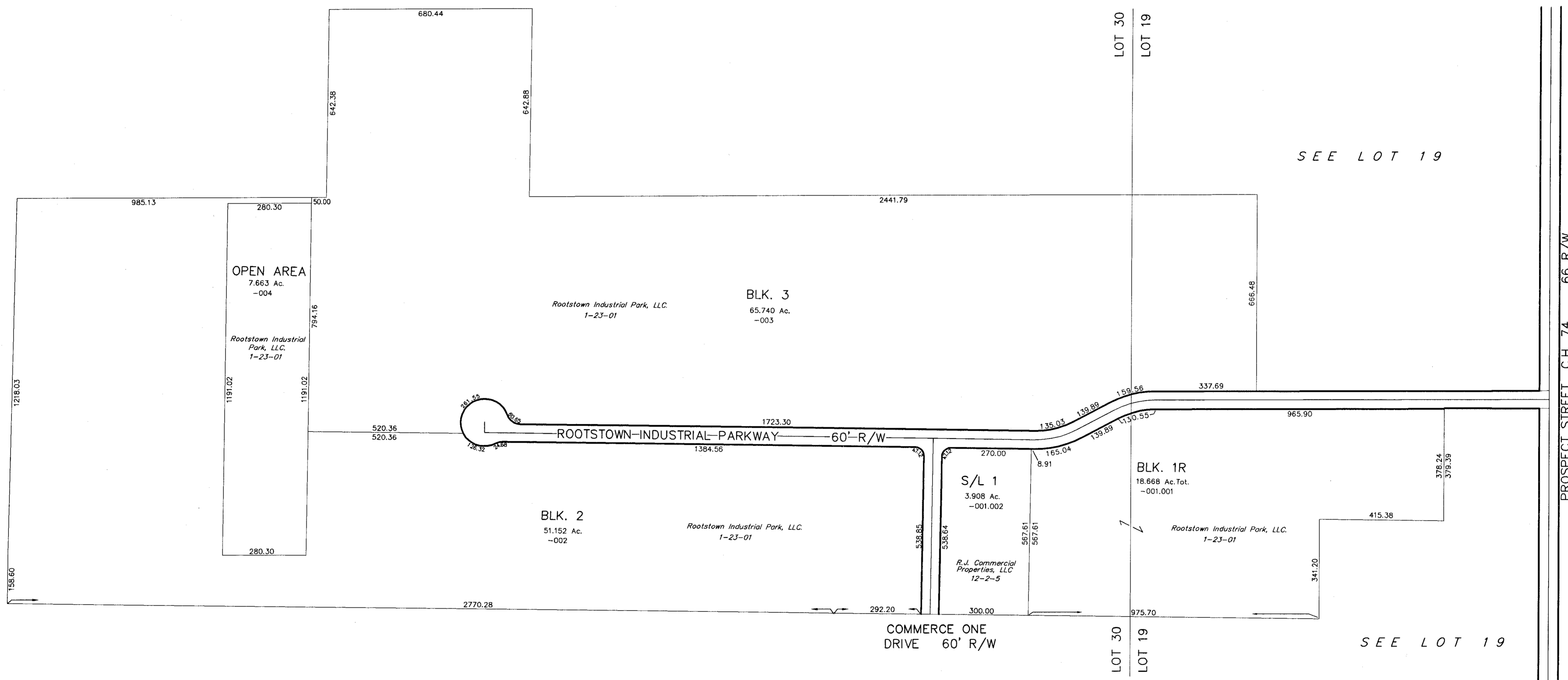
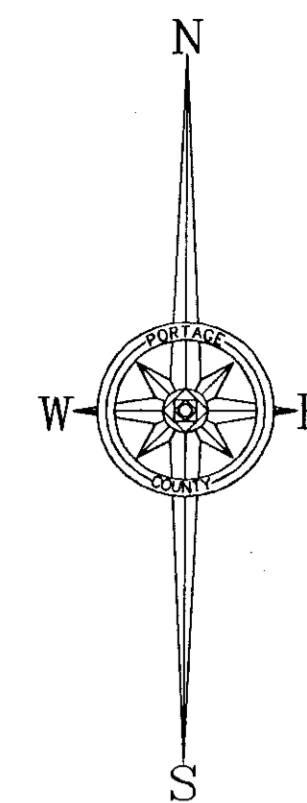


ROOTSTOWN INDUSTRIAL PARK

BLOCKS 1, 2, & 3 PLAT 2002-53 JUNE 26, 2002
REPLAT BLOCK 1 TO "BLOCK 1R" AND "SUB LOT 1" PLAT 2005-112



32-030-10-00-000.000
ROOTSTOWN TWP.