

SANDY LAKE
CH 89-E
60' R/W

SANDY LAKE
CH 89-F
60' R/W

20

TO THE STATE OF OHIO

- #1.1 .55 ac 9-13-65 781/485
- #1.2 .28 ac " " "
- #3.1 7.26 ac 8-8-67 810/198
- #3.2 .53 ac 10-5-66 738/343
- #4.1 .30 ac 8-8-67 810/198
- #5.1 2.24 ac 3-3-67 803/498
- #12.2 .19 ac " " "
- #13.1 .20 ac 2-3-67 802/417
- #18.1 .20 ac 8-2-66 795/478
- #26.1 .36 ac 3-3-66 790/54
- #27.1 .36 ac 12-21-65 786/417
- #27.2 2.69 ac " " "
- #29 1.00 ac 9-19-64 766/160
- #30 1.00 ac " " "
- 17.2-17.3 0.19 ac + 0.13 ac 10-16-66 789/345

LOT 29

LOT 17

SUBLOT 8-R PLAT 90-49
RESUBDIVISION SL 1
HINKLE ALLOTMENT Vol. 23 Pg 41
Vol. 9 PG 22

No.	NAME & DATE	Vol./Pg.
1	SEE PAGE 29	
2	W.J. B. KLINE	766/92
3	(SEE LOT)	
4	W.J. B. KLINE	
5	LINDA M. MANSFIELD 3-24-87	1099/133
6	LINDA M. MANSFIELD	1016/23
7	W.J. B. KLINE	766/92
8	W.J. B. KLINE	766/92
12		
13		
14		

NOTE FOR HINKLE ALLOTMENT
EAST 20' OF LOTS 12-13+14 - STATE OF OHIO
8-8-67 810/198
EAST PART OF 11 STATE OF OHIO 8-2-66 795/482

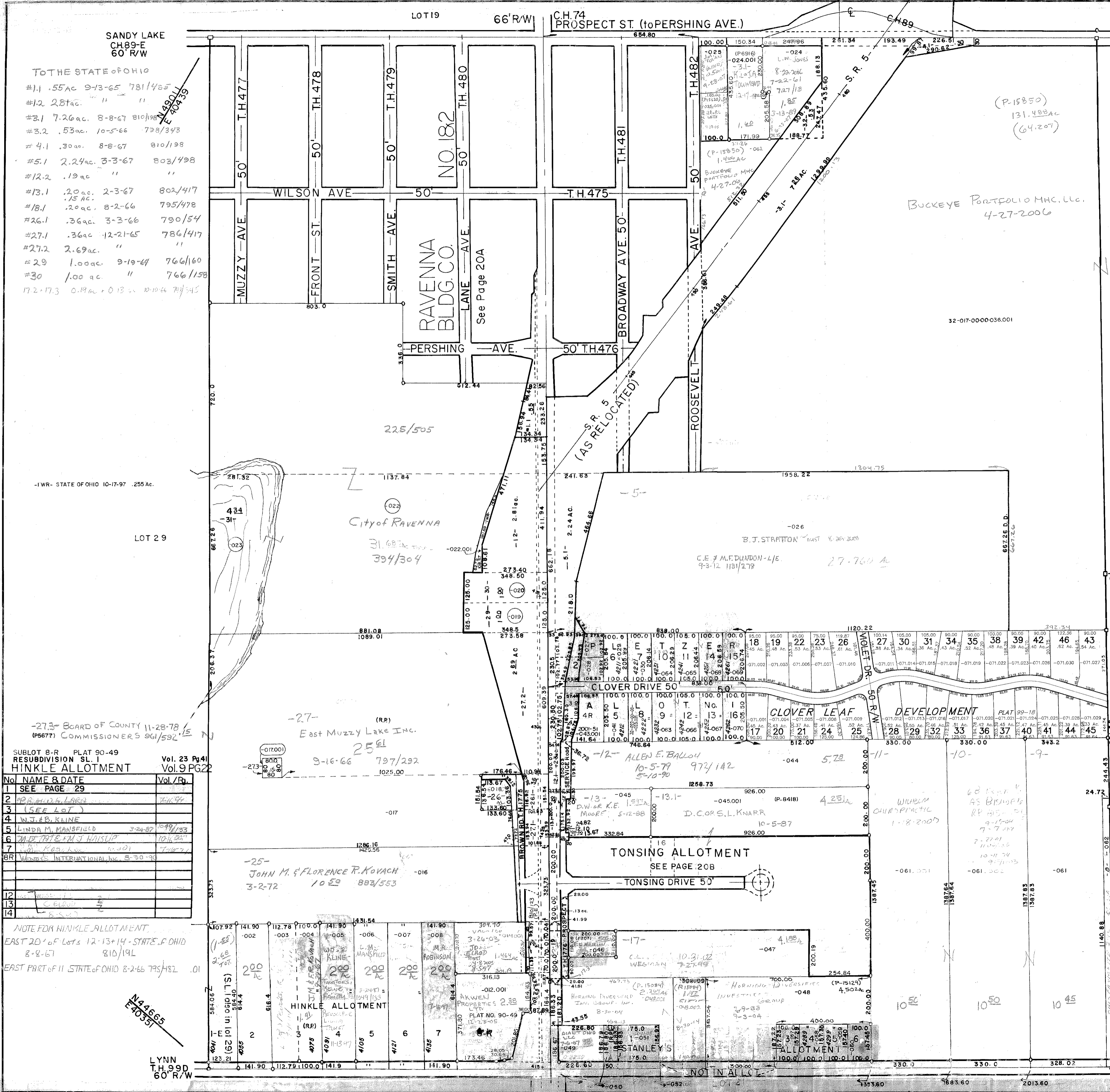
N44665
E40351

LYNN
T.H. 99D
60' R/W

32-020-00-00-000.000
ROOTSTOWN TWP
SCALE 1" = 200'

N44595
E44119

20



- 3- CHRIS TARNETTE INC .52 ac
- 14- C.A. WIGGILL .32 ac
- 15.1- W.A. & L. GIBSON .55 ac
- 15.2- R.J. & G.L. KLINE .46 ac
- 15.3- R. KLINE .64 ac
- 15.4- N.W. WAGNER .46 ac
- 17.1- B.K. STEIGERWALT 7.24 ac 734/255
- 19- L.E. & J.V. FLOWERS 7.44 ac 734/255
- 19.1- F.T. PALUMBO TRUST 8.27 ac 1-20-99
- 19.2- " " " " "
- 19.3- " " " " "
- 19.4- " " " " "
- 19.5- SCARLETTA HOOD TRUST 2.23 ac
- 26- 1/2 CANNON 7.24 ac
- 1/2 J.C. & A.M. BROWN 7-7-08

BUCKEYE PORTFOLIO MHC, LLC.
4-27-2006

32-017-0000-036.001

PLETZER ALLOTMENT NO. 1
SUB LOTS 1-16 PLAT BOOK VOL. 16, PG. 25
FOR OWNERSHIP SEE NAMESHEET 20
CLOVER LEAF DEVELOPMENT
SUB LOTS 17-46, PLAT 99-18 3-24-99
FOR OWNERSHIP SEE NAMESHEET 20
RE-RECORDING (CORRECTIONS) PLAT 99-52
RE-RECORDING (S/L 28 CORRECTIONS) PLAT 2001-42

STANLEY'S ALLOTMENT VOL. 12
PG. 27

- 1 2-11-2003
- 2 E. HORNING DIVERSIFIED INVESTMENTS
- 3 K.A. & D.D. KEUKHOF 10-21-77
- 4 WINDYBROOK TRUST 8-31-64
- 5
- 6

SR 44 (to PERSHING AVE)