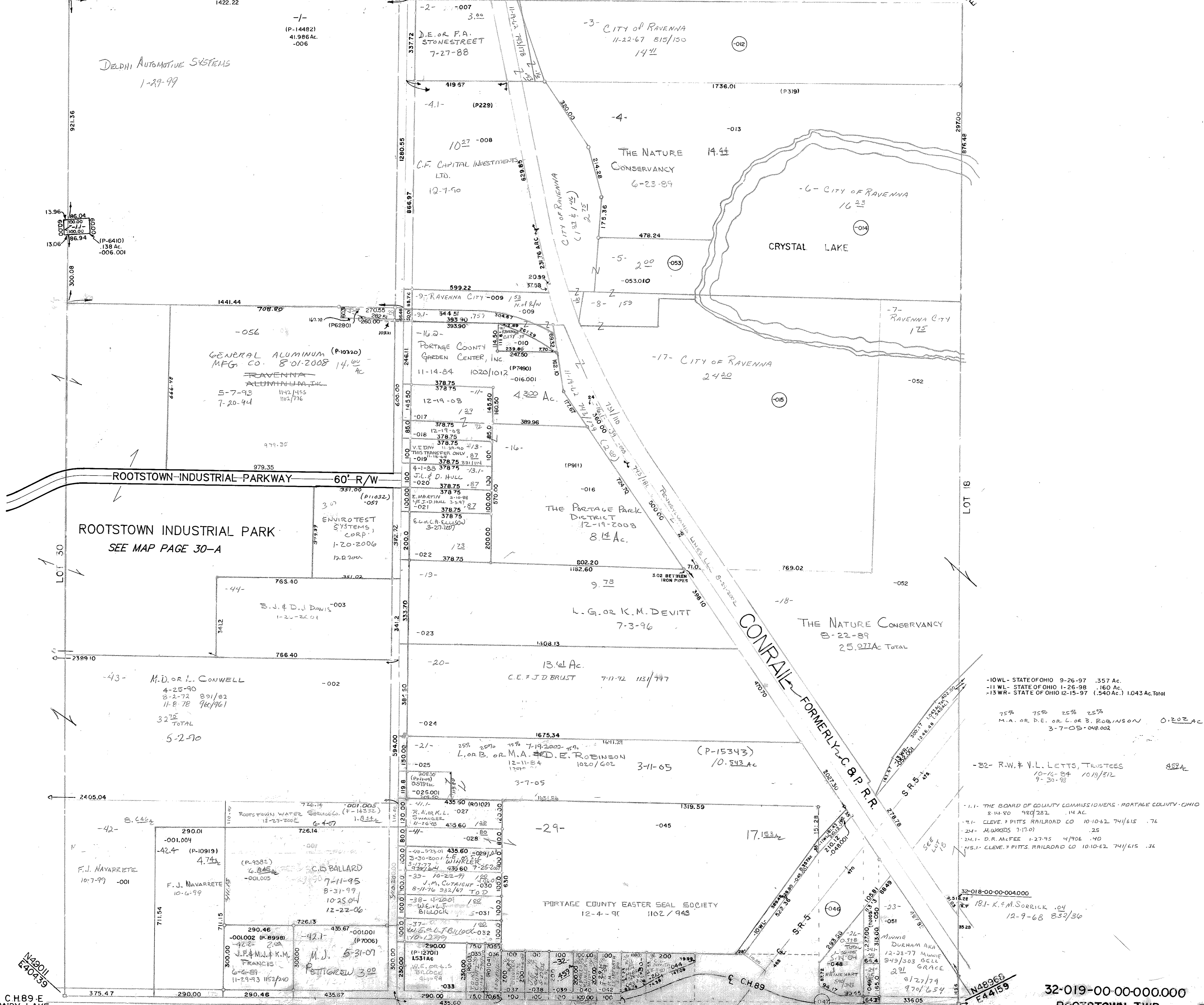


N53096
E40740

N53060
E44130

PROSPECT ST
CH.74

RAVENNA TWP.



DELPHI AUTOMOTIVE SYSTEMS
1-29-99

GENERAL ALUMINUM (P-10320)
MFG. CO. 8-01-2008 14.66 Ac
RAVENNA ALUMINUM, INC.
5-7-93 1142.1455
7-20-94 1162.716

ROOTSTOWN INDUSTRIAL PARK
SEE MAP PAGE 30-A

ENVIROTEST
SYSTEMS,
CORP.
1-20-2006
12.0200 Ac

M.D. OR L. CONWELL
4-25-90
8-2-72 891/82
11-8-78 962/961
32.75 TOTAL
5-2-90

F.J. NAVARRETE
10-7-99 -001

F.J. NAVARRETE
10-6-99

J.F. & M.J. & K.M.
FRANCIS
6-2-89
11-29-93 1152/210

M.J. 5-31-07
PATTIKREW 3.00

PORTAGE COUNTY EASTER SEAL SOCIETY
12-4-91 1102/943

L. OR B. OR M.A. & D.E. ROBINSON
12-11-84
1020/602

C.E. & J.D. BRUST
7-11-72 1131/777

THE PORTAGE PARK
DISTRICT
12-19-2008
8.14 Ac.

L.G. OR K.M. DEVITT
7-3-96

THE NATURE CONSERVANCY
8-22-89
25.0721 Ac TOTAL

-10 WL - STATE OF OHIO 9-26-97 .357 Ac.
-11 WL - STATE OF OHIO 1-26-98 .160 Ac.
-13 WR - STATE OF OHIO 12-15-97 (.540 Ac.) 1.043 Ac. Total

75% 75% 25% 25%
M.A. OR D.E. OR L. OR B. ROBINSON 0.202 Ac
3-7-05-048.002

-32- R.W. & V.L. LETTS, TRUSTEES
10-16-84 10/13/312
9-28-98

1-1- THE BOARD OF COUNTY COMMISSIONERS - PORTAGE COUNTY - OHIO
8-14-80 980/281 .14 Ac.
-9-1 CLEVELAND & PITTS RAILROAD CO 10-10-62 741/615 .74
-24- M. WOODS 7-17-01 .25
-24-1 D.R. MCFEE 1-27-95 4/906 .40
-45-1 CLEVELAND & PITTS RAILROAD CO 10-10-62 741/615 .34

32-018-00-004000
18-1 K.E.M. SORRICK .04
12-9-68 852/310

Minnie DUEHAM AKA
12-33-77 Minnie
949/303 BELL
GRACE
221
8/27/74
970/654

CH 89-E
SANDY LAKE
60'R/W

PROSPECT ST
CH.74 66'R/W

CH 89-F
SANDY LAKE

32-019-00-00-000.000
ROOTSTOWN TWP.
SCALE: 1"=200'