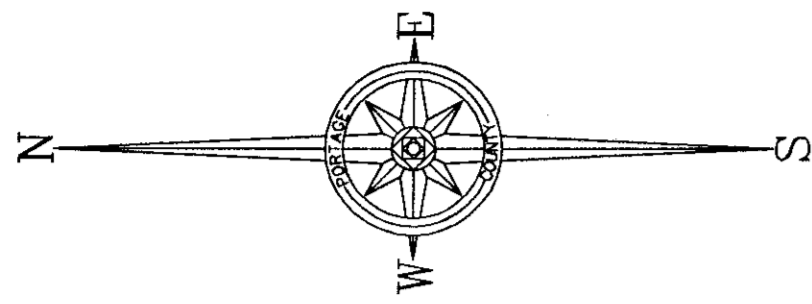


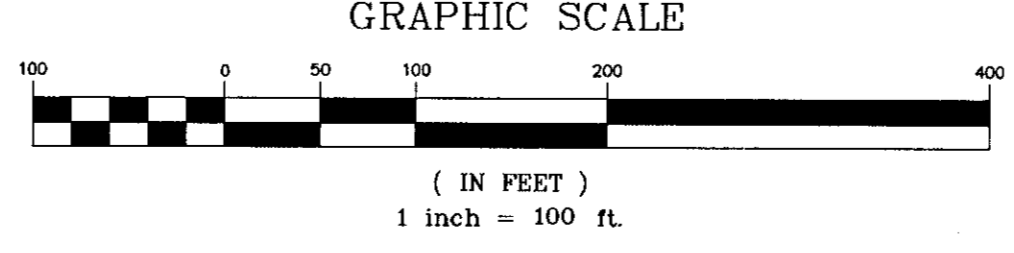
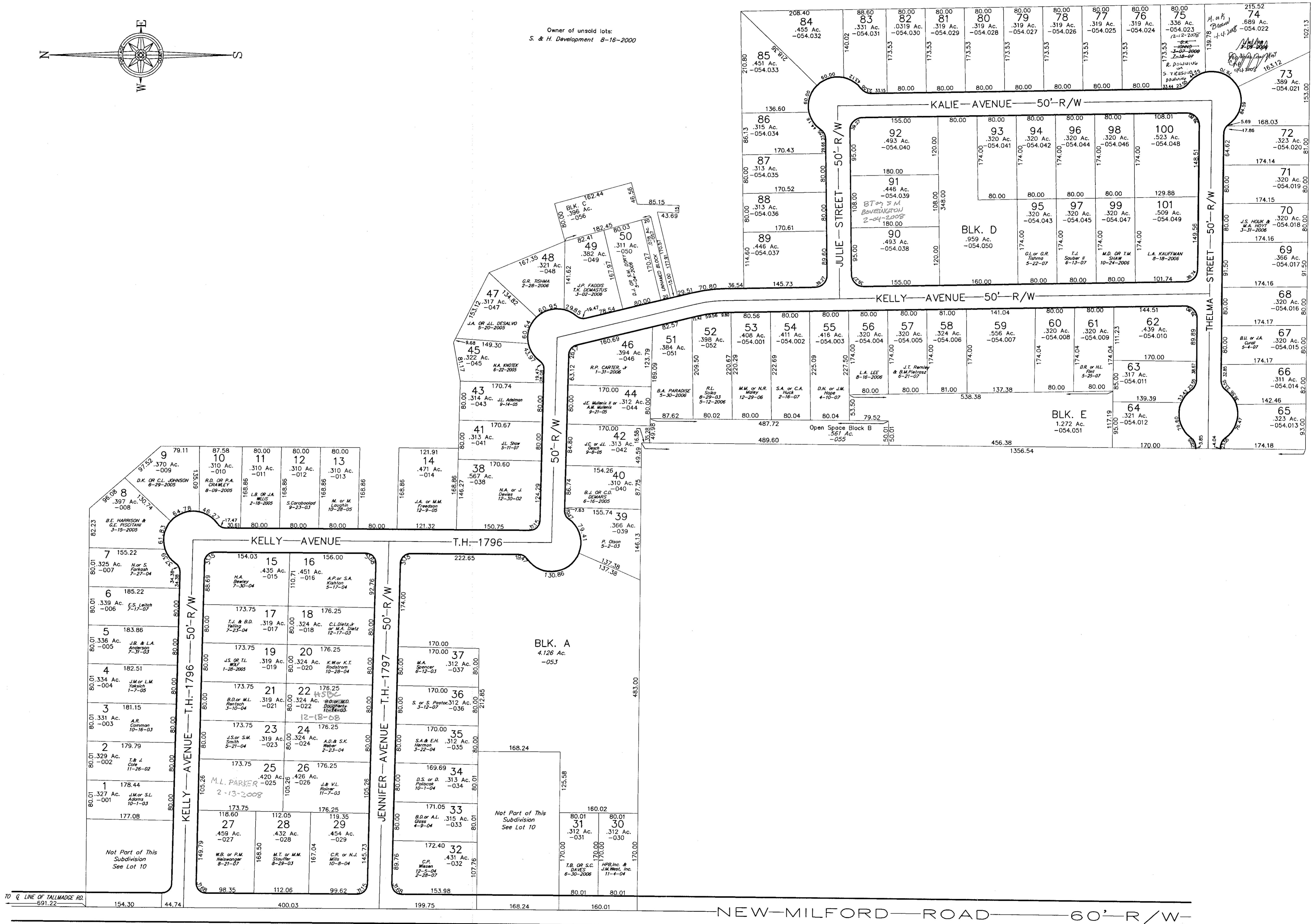
NEW MILFORD ESTATES

10-A

PHASE 1, SUBLOTS 1-52, & BLOCKS A & B PLAT 2002-5, 1-18-2002
 PHASE 2, SUBLOTS 53-101, & BLOCKS D & E PLAT 2005-134, 12-30-2005



Owner of unsold lots:
 S. & H. Development 8-16-2000



32-010-10-00-000.000
 ROOTSTOWN TWP. 10-A

FILE NO. 320101