

N 55781
E 38647

N 55825
E 41433

LOT 62

REPLAT VOL. 23 PG. 79
SOUTHVIEW ALLOTMENT VOL. II PG. 10

LOT	NAME	VOL./PG.
16	BEATRICE H. LELAND	9-6-83 100/180
17	K. O. J. KAMALI	12-27-99
18	13. EDWARDS, C. FLORENCE S. LEMON, JOHN CARAN, K. CAPRA	
19E		
19W	M. JONES	7-1-97
20		7-1-97
21R	Community + Economic Development Corp	7-17-2003
22R	W.D. ELLESPIC JR	3-10-92 112/192
23R	S. MAYNE	5-26-87
24R	R.L. OR S. EIKELBERRY	7-6-92 1128/164
24	WEST 40' N.L. HARTUNG OR R.T. STELZER	7-27-07
25	EAST 45'	
25	WEST 35' JEFFERY E. & SARAH DAVIS	3-30-76 927/702
26		

THE RAVENNA
BOARD OF
EDUCATION
1-31-72
882/274

RAVENNA Church
OF CHRIST
9-4-75
922/326

-2- (COMBINE 2427)
(P15335)
23,212.00
2,282,200.00
COMMUNITY + ECONOMIC DEVELOPMENT CORP.
7-17-2003

20.922 AC. TOT
(9.912 AC.)
The Byers DiPaola Circle LLC
10-26-05
8-23-83
1007/176
7-18-05

-2.5- O.H. & A. WILMINGTON
6-26-95 1014/460
4-17-97

-2.8- A.R. FLEGAL 1-14-98
28 AC. TOT
(.45)

CORP LINE
SUMMIT ROAD
C.H. 148-G
R/W 66'

CORP LINE
ORD. 1972-69

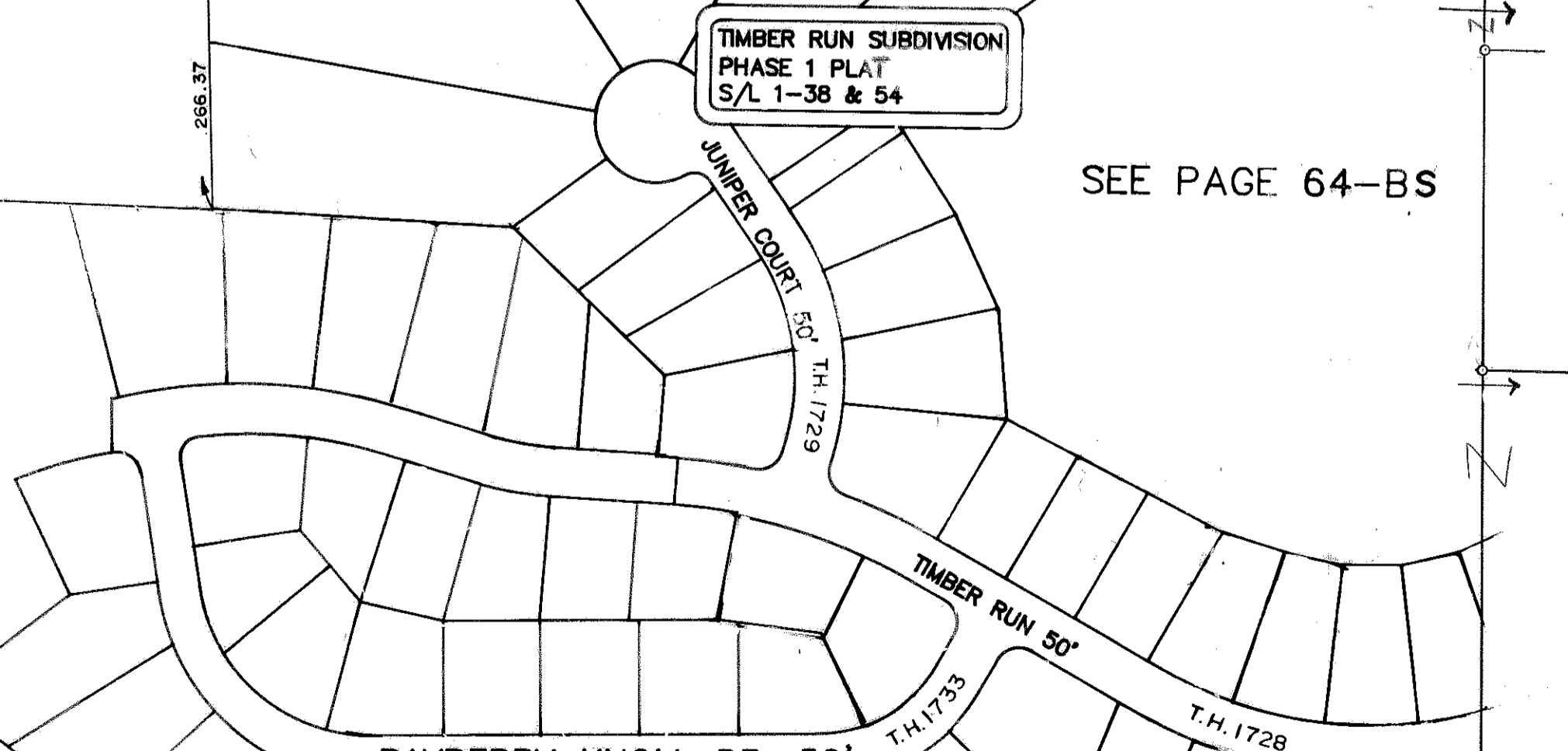
LOT	NAME	VOL./PG.
10	COIA S.D. NO. 2	219.35 -055.002
9	COIA SUBDIVISION	125.01 -055.001
1	COIA	110.66 -055
2	COIA	107.50 -054
3	COIA	107.50 -052
4	COIA	107.50 -051
5	COIA	107.50 -048
6	COIA	107.50 -043
7	COIA	107.50 -043
8	COIA	107.50 -047
10	COIA	219.14
11	COIA	125.01
12	COIA	105.99
13	COIA	107.50
14	COIA	107.50
15	COIA	107.50
16	COIA	107.50
17	COIA	107.50
18	COIA	107.50
19	COIA	107.50
20	COIA	107.50
21	COIA	107.50
22	COIA	107.50
23	COIA	107.50
24	COIA	107.50
25	COIA	107.50
26	COIA	107.50
27	COIA	107.50
28	COIA	107.50
29	COIA	107.50
30	COIA	107.50
31	COIA	107.50
32	COIA	107.50
33	COIA	107.50
34	COIA	107.50
35	COIA	107.50
36	COIA	107.50
37	COIA	107.50
38	COIA	107.50
39	COIA	107.50
40	COIA	107.50
41	COIA	107.50
42	COIA	107.50
43	COIA	107.50
44	COIA	107.50
45	COIA	107.50
46	COIA	107.50
47	COIA	107.50
48	COIA	107.50
49	COIA	107.50
50	COIA	107.50
51	COIA	107.50
52	COIA	107.50
53	COIA	107.50
54	COIA	107.50
55	COIA	107.50
56	COIA	107.50
57	COIA	107.50
58	COIA	107.50
59	COIA	107.50
60	COIA	107.50
61	COIA	107.50
62	COIA	107.50
63	COIA	107.50
64	COIA	107.50
65	COIA	107.50
66	COIA	107.50
67	COIA	107.50
68	COIA	107.50
69	COIA	107.50
70	COIA	107.50
71	COIA	107.50
72	COIA	107.50
73	COIA	107.50
74	COIA	107.50
75	COIA	107.50
76	COIA	107.50
77	COIA	107.50
78	COIA	107.50
79	COIA	107.50
80	COIA	107.50
81	COIA	107.50
82	COIA	107.50
83	COIA	107.50
84	COIA	107.50
85	COIA	107.50
86	COIA	107.50
87	COIA	107.50
88	COIA	107.50
89	COIA	107.50
90	COIA	107.50
91	COIA	107.50
92	COIA	107.50
93	COIA	107.50
94	COIA	107.50
95	COIA	107.50
96	COIA	107.50
97	COIA	107.50
98	COIA	107.50
99	COIA	107.50
100	COIA	107.50

OWNER VACANT LOTS: FRANCES E. COIA
COIA SUBDIVISION VOL. 21 PG. 7

LOT	NAME	VOL./PG.
1	F.C. SISLEY	8-30-96
2	PREMIER TOWN HOMES, INC.	9-12-94 1163/420
3	R.A. & D.N. DILLON	8-25-87
4	K.A. OR D.R. LEWIS	9-4-98
5		
6		
7	V. OR S. COIA	10-29-99
8	J. COIA	5-14-98 5-7-99
9	COIA SUBDIV. NO. 2	VOL. 22 PG. 41
10	L.M. LOMBARDI	11-21-08
11	K. OR R.J. NEFF	11-19-98

COIA S.D. NO. 2
COIA SUBDIVISION
COIA MGMT CO. LTD
12-31-96

JOSEPH COIA
8-3-81 989/213
WIS. HOMES, INC.
8-29-02



TIMBER RUN SUBDIVISION
PHASE 1 PLAT
S/L 1-38 & 54

SEE PAGE 64-BS

HERFF ROAD
TH 105-A
60' R/W

N 53115
E 38433

N 53088
E 41256

ROOTSTOWN TOWNSHIP

29-363-00-00-000.000

RAVENNA TWP. & CITY 63-S

SCALE 1" = 150'

TIMBER RUN SUBDIVISION
PHASE 2 PLAT 2000-4