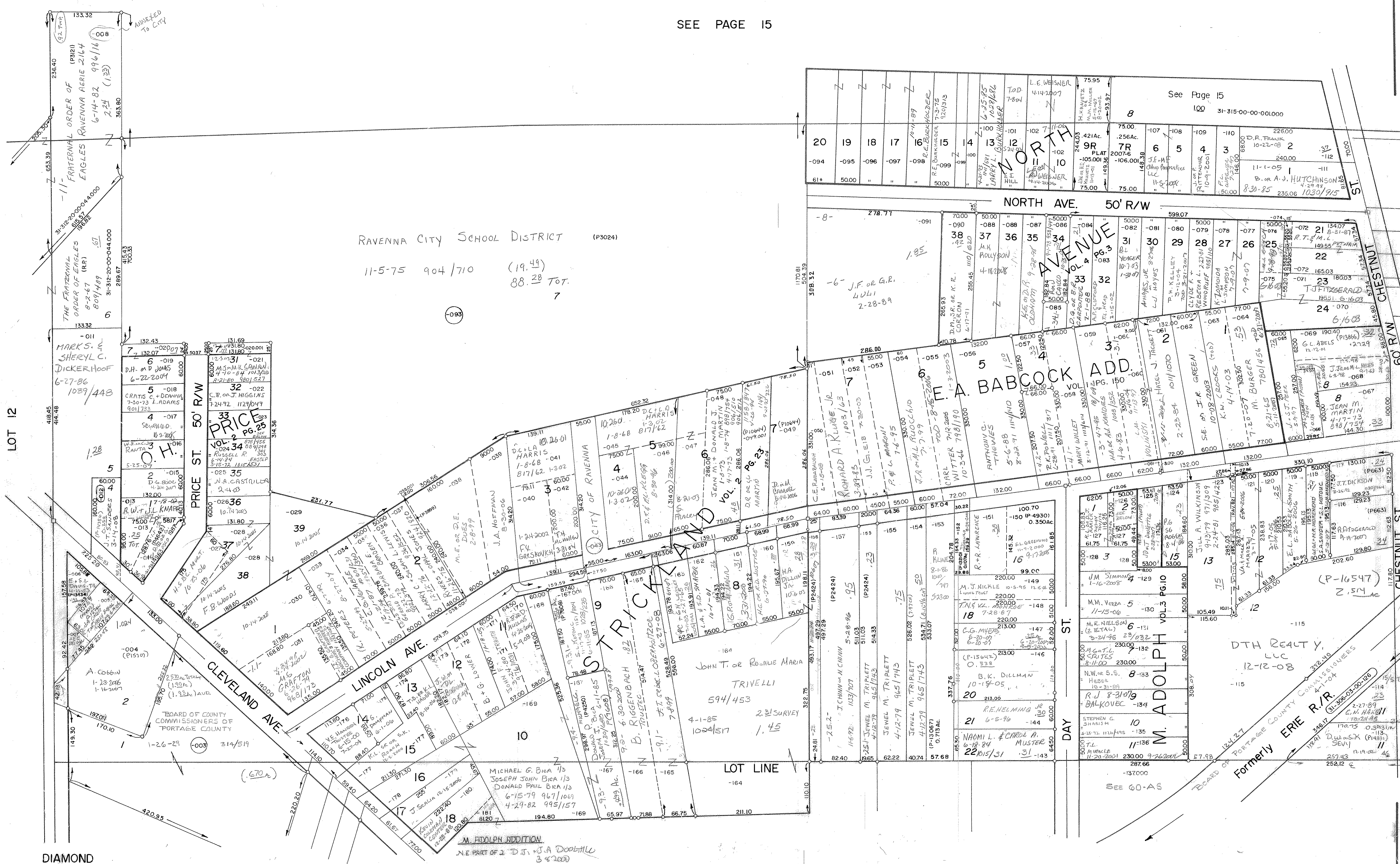


SEE PAGE 15



RAVENNA CITY SCHOOL DISTRICT (P3024)

11-5-75 904/710 (19.49)
88.28 Tot.
7

LOT 12

LOT 16

DIAMOND ST.

CHESTNUT ST.

M. ADOLPH ADDITION
N.E. PART OF 2 D.J. & J.A. DOOLITTLE
3 & 2000

3- J.J. & L.L. AYLRARD
7-27-2001

D.N. PRICE ALLOT

- 4- V.L. JONES VS. Z.A. BOLDEW VS. C. PROCKES VS. K. WOODRUFF VS. I. LOTTI VS. L. VS. 3-14-97 906/345
- 33- A.J. HIGGINS 2-28-78 950/476
- 007 D.J. & S.C. HAYDEN 11-2-00
- 118- WU + H.A. MOREHEAD + S.F. ENYDER + S.L. KOTOLEC L.L. W.M. MOREHEAD 5-3-89

SEE PAGE 60-AS

SEE LOT 60

31-315-10-00-000 000
RAVENNA CITY
SCALE 1" = 100'

15-A