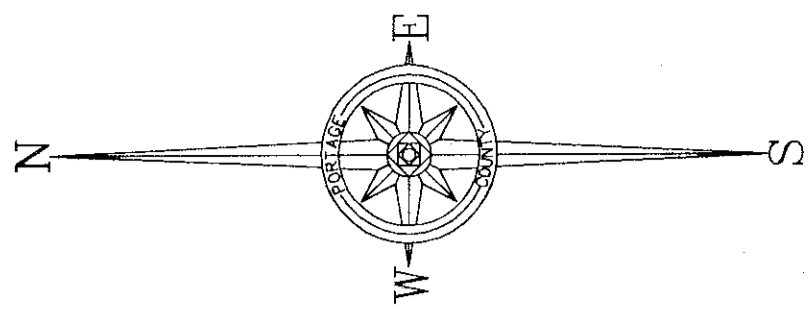


S.H. 323
RAVENNA-KENT
S.R. 59 60'R/W

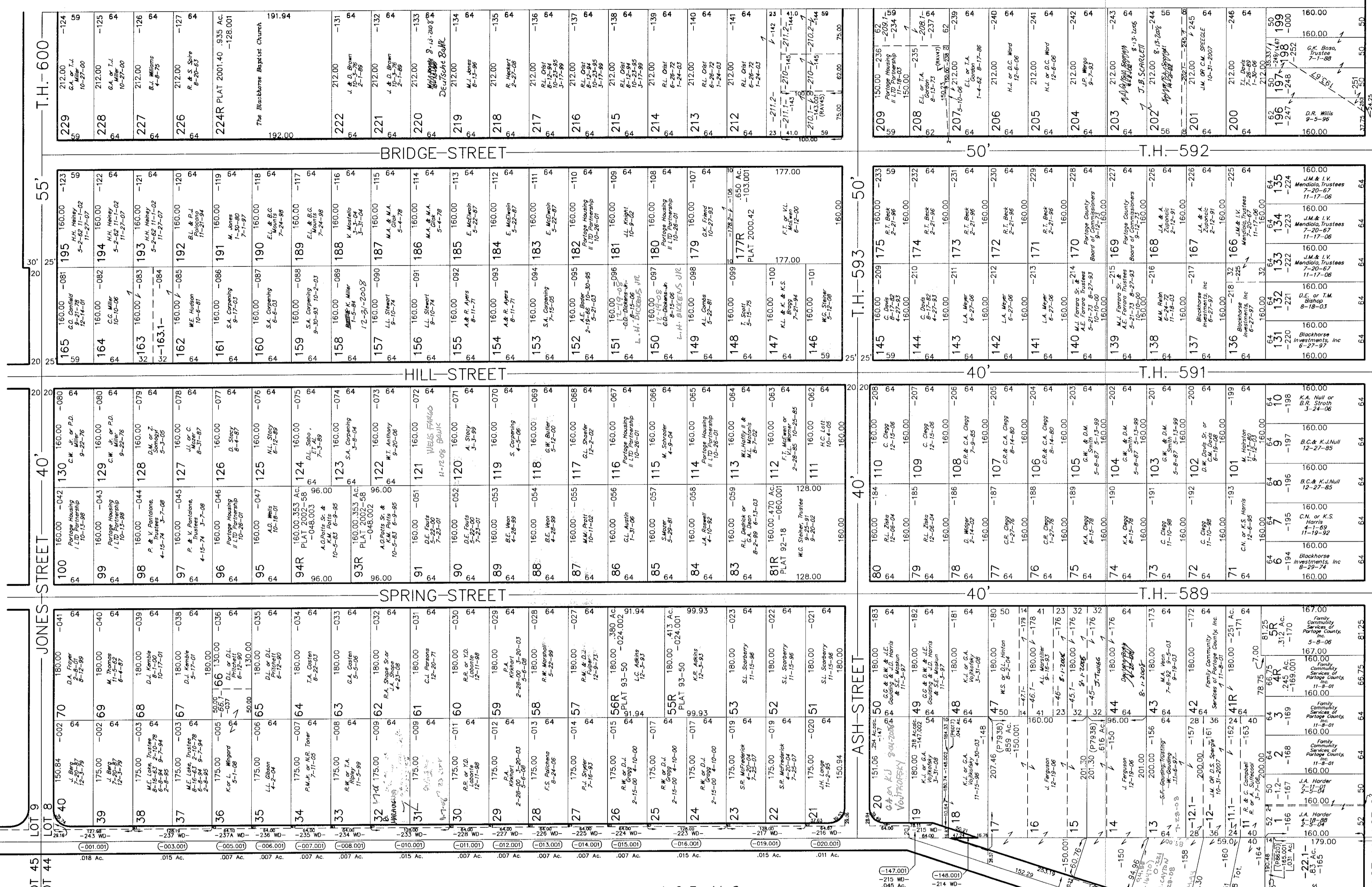
JONES ST.
ESTABLISHMENT PLAT
RES. NO. 65-55



LOT 8-5

-211.1 - R. & C. Canning
-210.1 -
-210.2 - V.A. Horvath
-210.2 - 2-28-85
-209.1 - F.D. Cole or L.E. Cole
-208.1 -

LOT 9-5



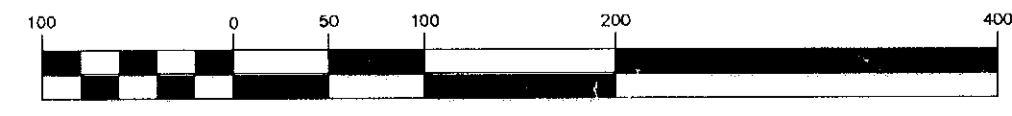
C.H. 159-A
WALL ST.
40'R/W

LOT 45
LOT 44

- 202 WD - Portage County 11-30-78 961/634
- 203 WD - Portage County 3-11-80 976/600
- 208 WD - Portage County 7-24-78 956/909
- 209 WD - Portage County 12-08-78 961/970
- 214 WD - Portage County 11-29-78 935/921
- 215 WD - Portage County 1-14-77 937/83
- 216 WD - Portage County 5-11-77 940/485
- 217 WD - Portage County 10-08-76 934/170
- 223 WD - Portage County 10-08-76 934/168
- 224 WD - Portage County 9-29-76 933/916
- 225 WD - Portage County 8-25-77 944/796
- 226 WD - Portage County 5-11-77 940/477
- 227 WD - Portage County 7-24-78 956/909
- 228 WD - Portage County 5-11-77 940/481
- 233 WD - Portage County 12-13-76 936/232
- 234 WD - Portage County 2-14-77 937/798
- 235 WD - Portage County 2-28-77 937/1189
- 236 WD - Portage County 3-14-77 938/442
- 237 WD - Portage County 2-28-77 937/1191
- 237A WD - Portage County 5-18-78 860/745
- 243 WD - Portage County 10-04-76 935/1050

LOT 44-5

GRAPHIC SCALE



(IN FEET)
1 inch = 100 ft.

BABCOCK & MOTZ ALLOTMENT
VOL. 4, PG. 25 & 32
(SUB LOT 250 ONLY, PLAT 89-32)

C.H. 62
BRADY LAKE RD.
45'R/W

29-308-20-00- 000.000
RAVENNA TWP. 8-B S

LOT 7-5

REPLAT OF S/L 4R, 5R, & 41R
PLAT BOOK VOL. 35, PG. 16