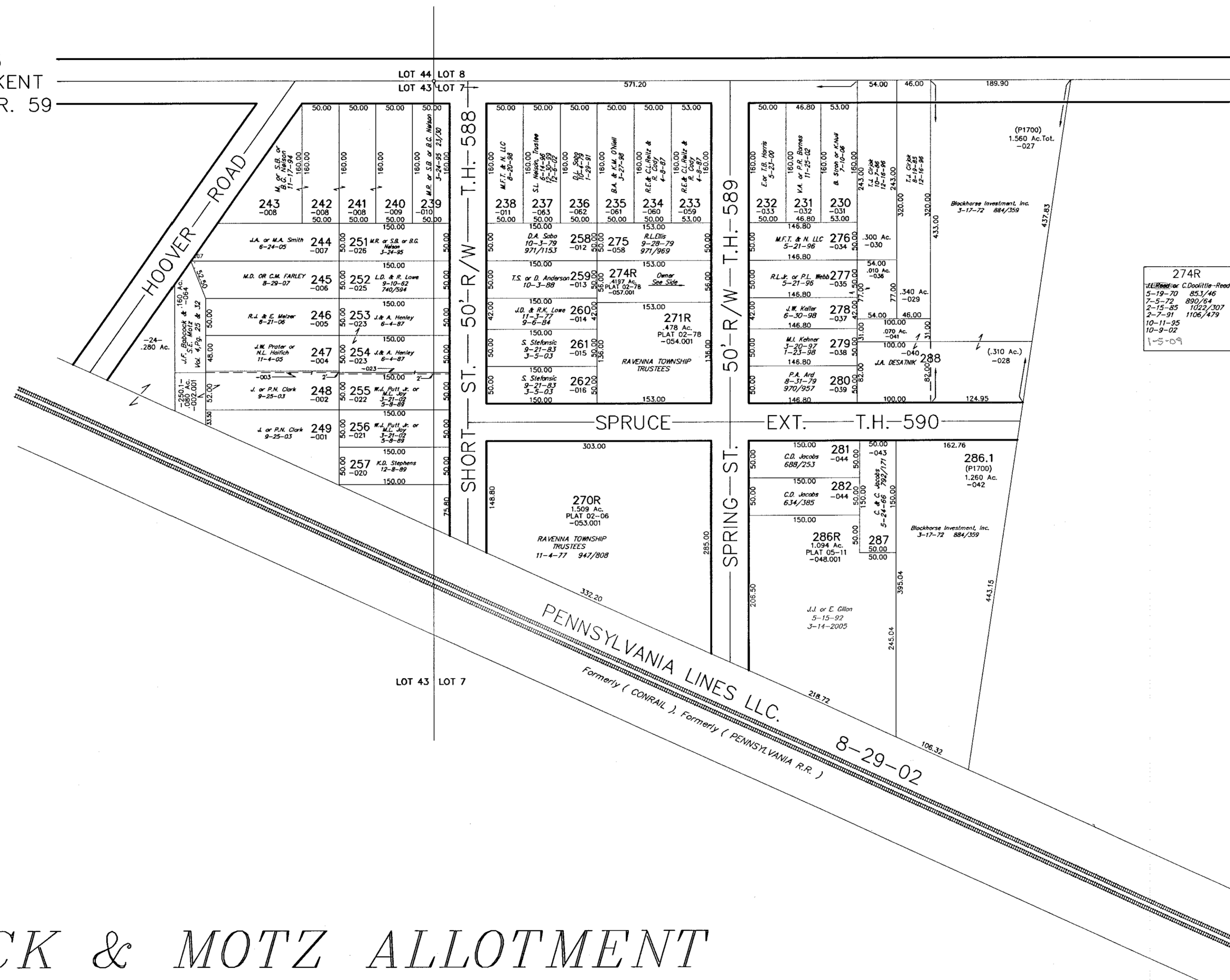


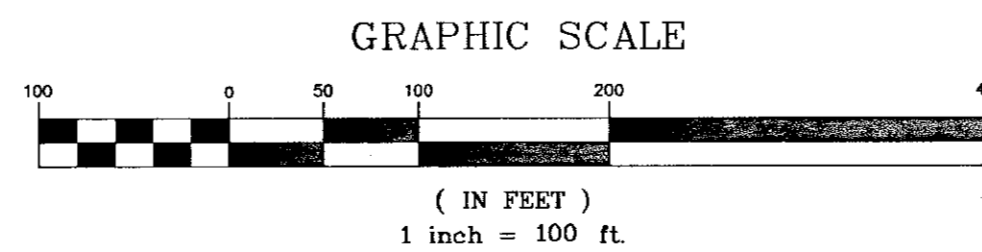
S.H. 323
RAVENNA-KENT
60' R/W S.R. 59



274R
C. D. Jacobs
5-19-70 853/46
7-5-72 890/54
2-15-85 1022/307
2-7-91 1106/479
10-11-95
10-9-02
1-5-09

BABCOCK & MOTZ ALLOTMENT

VOLUME 4, PAGE 25 & 32
PLAT 89-32 (SUB LOT 250 ONLY)



29-307-10-00-000.000
RAVENNA TWP.