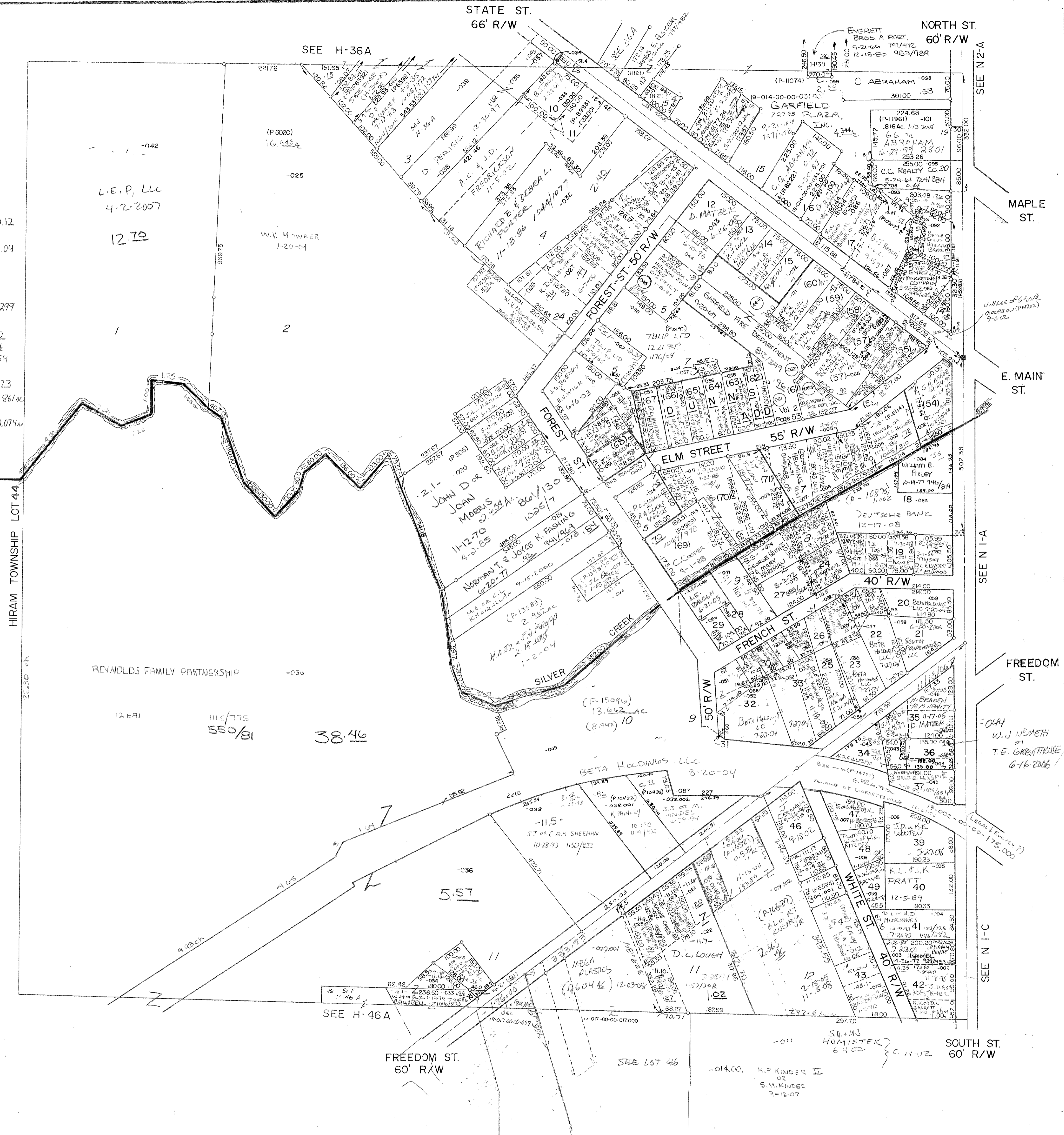


- 14.1-14.2 GARFIELD PLAZA INC 8-692 1129/892.
- 14.2.1 GARFIELD PLAZA INC 7-14-87 0.12
- 14.3 THE HUNTINGTON PORTAGE NATIONAL BANK 5-31-78 954/1 0.04
- 2.3 (PART) C.E. ANGEL 12-12-95
- 17.1 THE SECOND NATIONAL BANK OF WARREN 12-8-94
- 20.1+22.1 J.L. & J.E. LAWLESS 9-27-95
- 67-68-69-611 SHEL INVESTMENTS 1-18-95 03/297
- 30-32 (PART) M.W. & P. ROHRBAUGH 3-4-97
- 43- D.G. & E.L. GREEN 10-2-62 741/372  
2-10-73 896/546  
7-22-94 1164/854
- 45 The Bank of N.Y. Trust Company 3-4-2007
- 45.1 M. H. THOMPSON 9-4-81 989/1123
- 57 N.W.-57 PART MIDDLEFIELD BANKING CO. 9-30-97 0.861 ac  
9-24-97 (25'x150')
- 57 PART JT. & B.A. JOHNSON-TRUST 3-22-91 1106/968 0.074 ac

PARCEL NUMBER REFERENCE  
NORTH OF LINE PAGE # 15

PARCEL NUMBER REFERENCE  
SOUTH OF LINE PAGE # 16



GARRETTSVILLE VILLAGE  
SCALE 1" = 150'

19-015-00-00-000.000  
19-016-00-00-000.000  
**H45 A**