

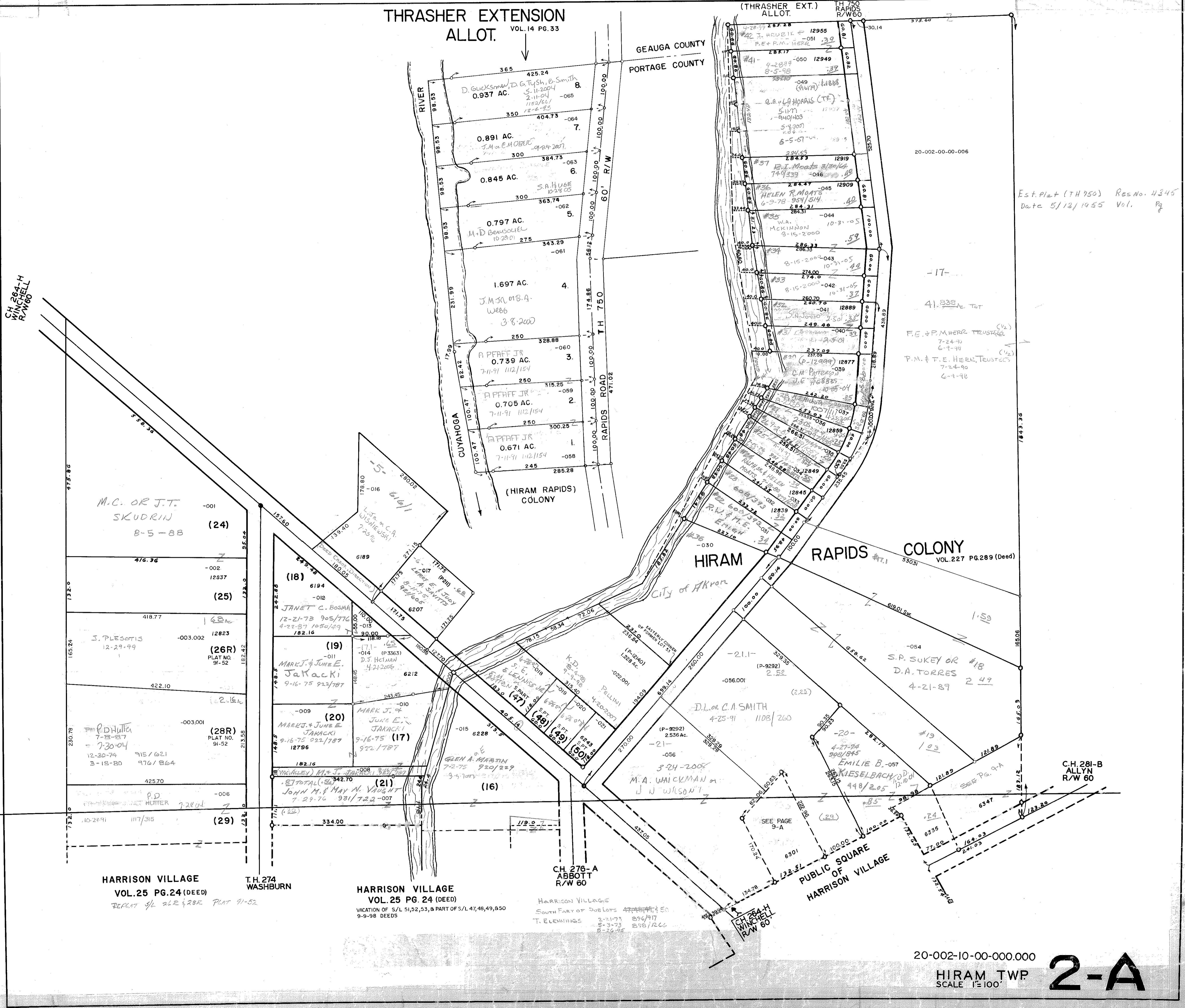
THRASHER EXTENSION ALLOT. VOL. 14 PG. 33

GEAUGA COUNTY
PORTAGE COUNTY

(THRASHER EXT.) ALLOT. TH 760 RAPIDS R/W 60

CH 264-H WINSHELL R/W 60

Est. Plat (TH 750) Res. No. 4345
Date 5/13/1955 Vol. Pg



M.C. OR J.T. SKUDRIN (24)
8-5-88

(25)
418.77

J. PLESANTIS (26R)
12-29-99

(28R)
7-28-87
7-30-04

(29)
10-24-91

HARRISON VILLAGE VOL. 25 PG. 24 (DEED)
REPLAT 1/2 262 & 288 PLAT 91-52

T.H. 274 WASHBURN

HARRISON VILLAGE VOL. 25 PG. 24 (DEED)
VACATION OF S/L 51,52,53, & PART OF S/L 47,48,49,850 9-9-98 DEEDS

CH 276-A ABBOTT R/W 60

HARRISON VILLAGE SOUTH PART OF SUBLOTS 47,48,49,850 T. ELEMINGS 2-21-73 896/917 3-3-73 898/1266 5-26-95

(HIRAM RAPIDS) COLONY

HIRAM RAPIDS COLONY VOL. 227 PG. 289 (Deed)

PUBLIC SQUARE OF HARRISON VILLAGE

20-002-10-00-000.000

HIRAM TWP SCALE 1"=100'

2-A