

60' R/W
CH. 219-C
STREET

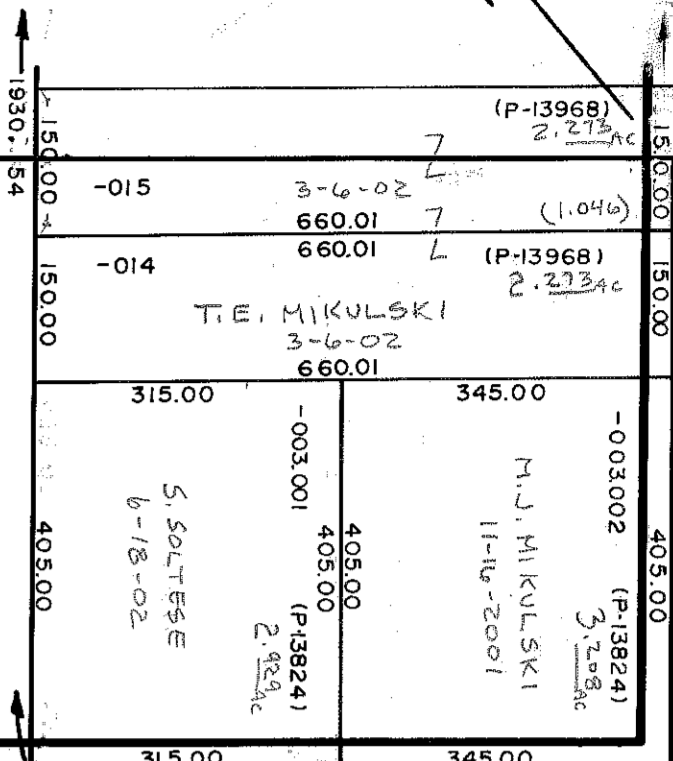
LOT 60

T.H. 227-A 60' R/W
STAMM

CH. 219-D
STREET
60' R/W

N 98022
E 65735

N 98002
E 63782



LOT 69

C.E. & R.E. BUDNIKOWS
TRUST
4.1.03
(P-1288)
87,344.5 AC
(27,217.8)

LOT 53

G.R. BROOKOVER
A.S. BROOKOVER
(P-8456)
11-12-87
4-21-2004
8-31-2004

N 95371
E 63251

LOT 62

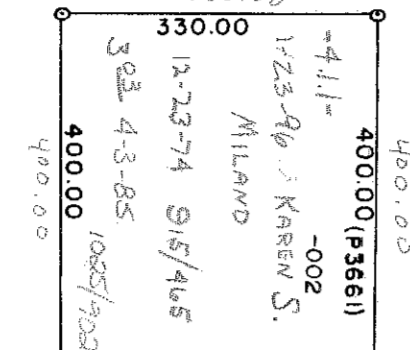
ETM. WEST FAMILY LIMITED PARTNERSHIP
12-9-02

(P-14318)
73,887 AC

N 95349
E 65802

LOT 70

C.E. & R.E. BUDNIKOWS
(TR)
135.26 TR
(35.9L)
1-20-89
8-25-97



LOT 54

ETM WEST FAMILY LIMITED PARTNERSHIP
12-9-02

ARMY L. S. BROOK OVER
10-22-85 1032/413
10-22-85 1032/415
10-22-85 1032/419

OHIO TURNPIKE

42'

N 92606
E 63310

CH. 23-B
ASBURY
60' R/W

FREEDOM TWP.
SCALE: 1" = 200'

N 92629
E 65854
18-061-00-00-000.000
61 & 62