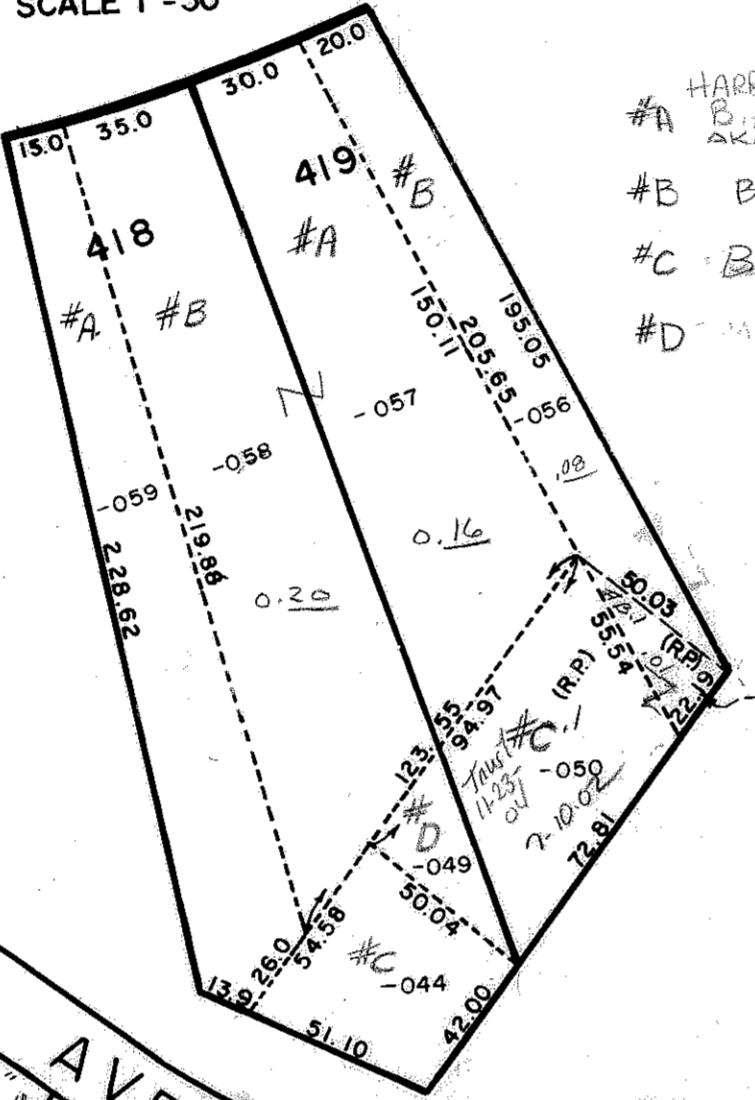


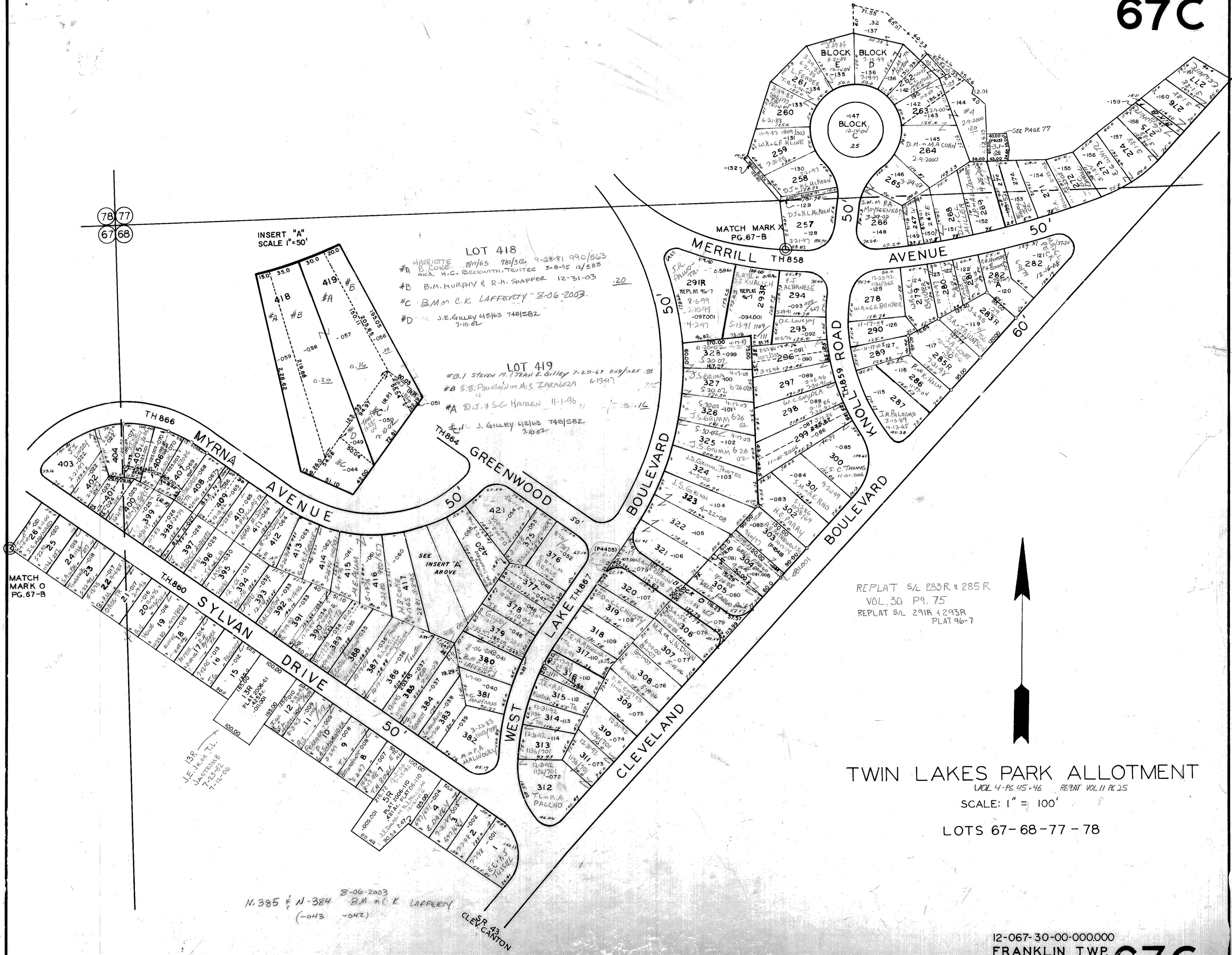
78 77
67 68

INSERT "A"
SCALE 1"=50'



LOT 418
#A HARRIETTE B. COLE 8/1/65 780/312 9-28-81 990/563
AKA. H.C. BECKWITH, TRUSTEE 3-8-95 12/583
#B B.M. MURPHY & R.M. SHAFFER 12-31-03 20
#C B.M. & C.K. LAFFERTY 8-06-2003
#D J.E. GILLEY 4/5/63 748/582 7-10-02

LOT 419
#B.1 STEVEN M. & FRANK E. GILLEY 7-29-67 809/285 21
#B S.B. POUNTAIN & MRS. ZACKORZA 6-13-97 225
#A D.J. & S.C. HARMEN 11-1-96 116
#J. GILLEY 4/5/63 748/582 7-10-02



REPLAT S/L 283R & 285R
VOL. 30 P. 75
REPLAT S/L 291R & 293R
PLAT 96-7

TWIN LAKES PARK ALLOTMENT
VOL. 4 - PG. 45-46 REPLAT VOL. 11 PG. 25
SCALE: 1" = 100'
LOTS 67-68-77-78

8-06-2003
N. 385 & N. 384 B.M. & C.K. LAFFERTY
(-043 -042)