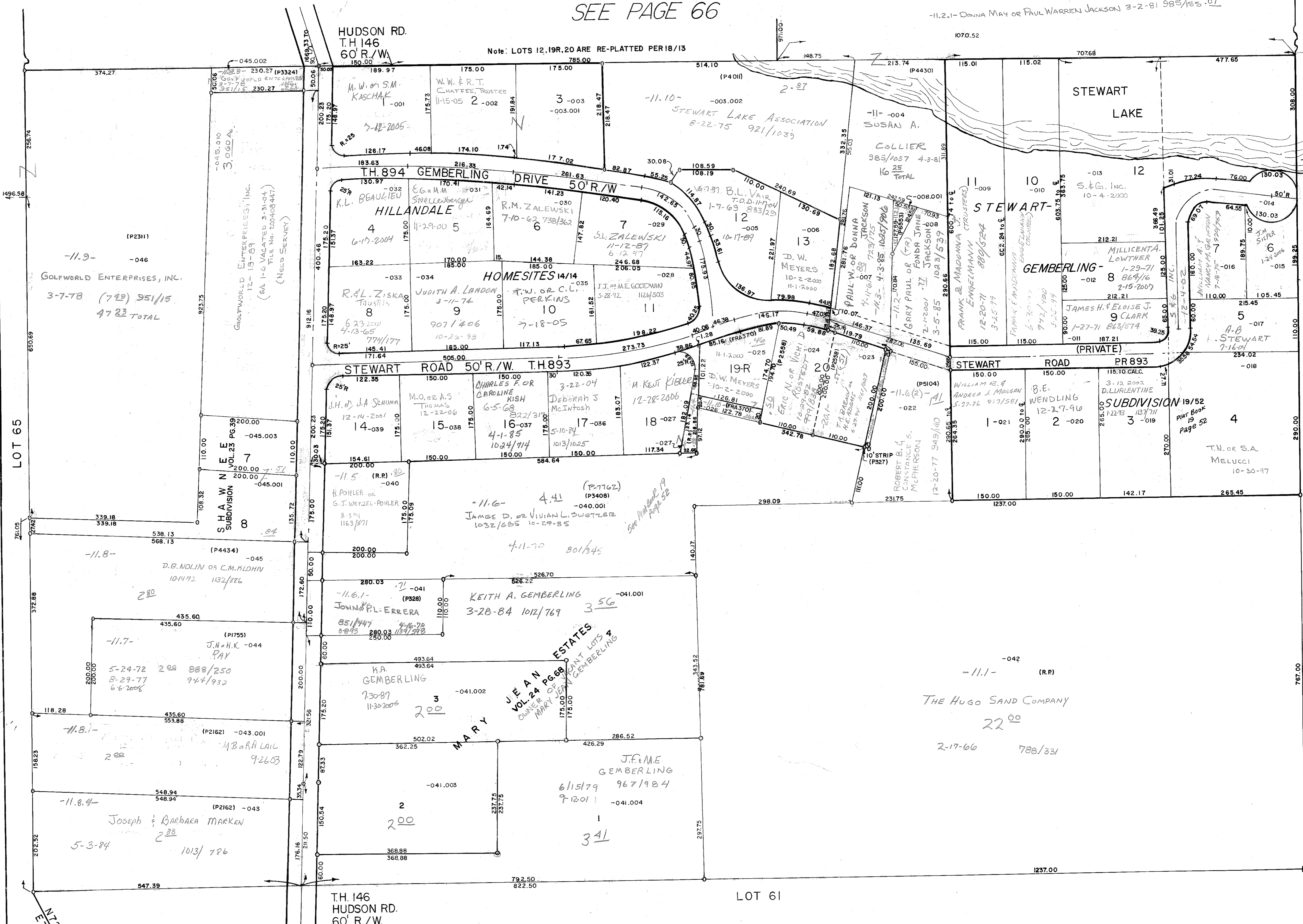


SEE PAGE 66

-11.2-1- DONNA MAY OR PAUL WARREN JACKSON 3-2-81 985/155 .07

Note: LOTS 12, 19, 20 ARE RE-PLATTED PER 18/13



(P2311)
 -11.3-
 -046
 GOLF WORLD ENTERPRISES, INC.
 3-7-78 (729) 951/15
 47.23 TOTAL

GOLF WORLD ENTERPRISES, INC.
 (64 1-C VACATED 3-31-04
 FILE NO. 00403447)
 (NEED SURVEY)

S.H.A.W. N. E.
 VOL. 23 PG. 39
 SUBDIVISION
 7
 200.00
 200.00
 200.00
 -045.003
 -045.001

-11.6-
 4.41
 -040.001
 JAMES D. OR VIVIAN L. SWITZER
 10-29-85

KEITH A. GEMBERLING
 3-28-84 1012/769 356

J.E. & M. ESTATES
 VOL. 24 PG. 68
 OWNER OF JOINT LOTS 4
 MARY E. GEMBERLING

THE HUGO SAND COMPANY
 22.00
 2-17-66 788/331