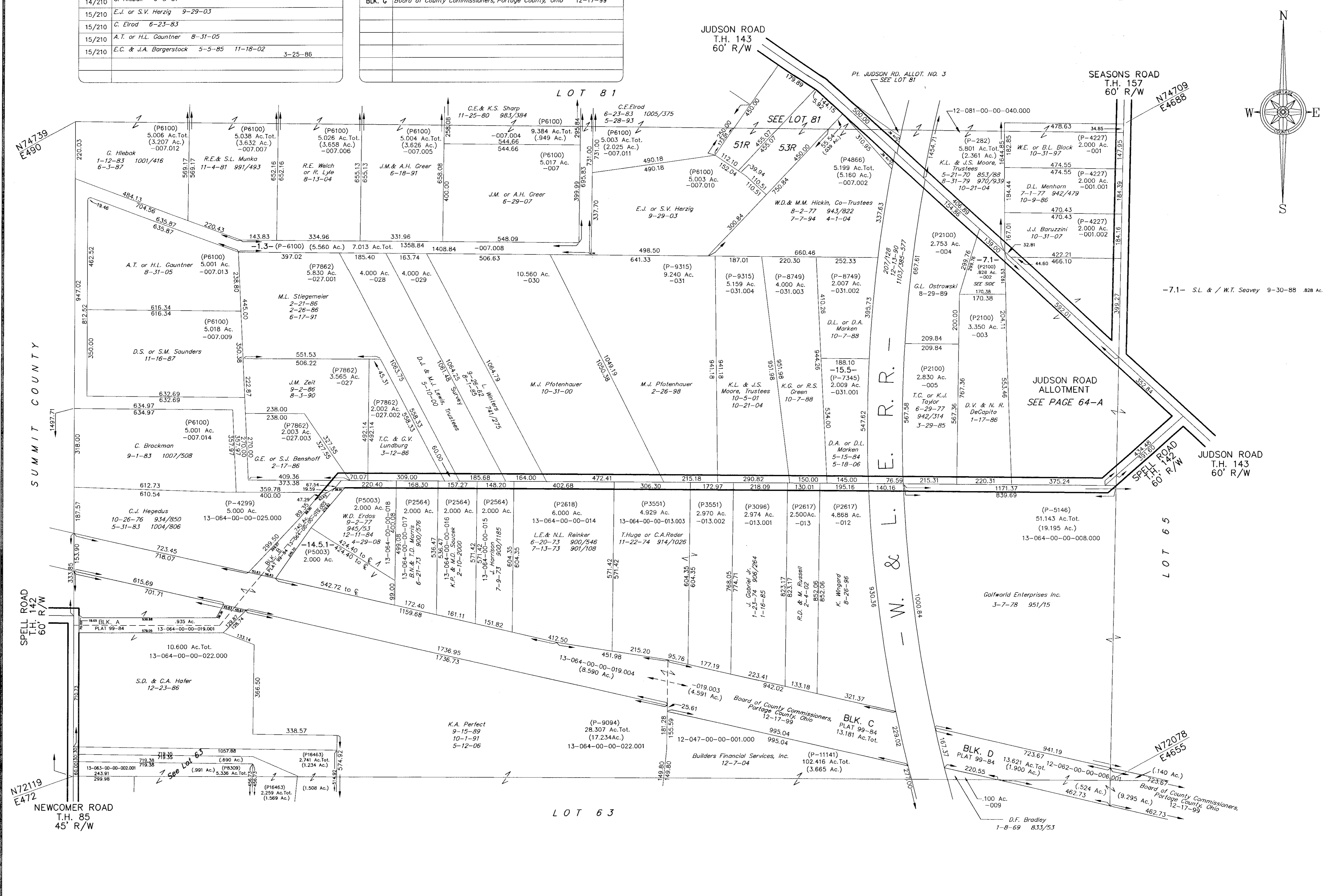


66/210	S. or J. Ivanov	3-29-91
14/210	R.E. or R. Lyle	8-13-04
14/210	C.E. & K.S. Sharp	11-25-80
14/210	J. Mrksich	12-12-80
14/210	R.E. & S.L. Munka	11-4-81
14/210	L.L. Lee	1-9-80
14/210	G. Hiebak	6-3-87
15/210	E.J. or S.V. Herzig	9-29-03
15/210	C. Elrod	6-23-83
15/210	A.T. or H.L. Gantner	8-31-05
15/210	E.C. & J.A. Bargerstock	5-5-85 11-18-02 3-25-86

THE BIKE & HIKE TRAIL EXTENSION, Plat 99-84		
BLK. A	Board of County Commissioners, Portage County, Ohio	12-17-99
BLK. B	Board of County Commissioners, Portage County, Ohio	12-17-99
BLK. C	Board of County Commissioners, Portage County, Ohio	12-17-99
BLK. D	Board of County Commissioners, Portage County, Ohio	12-17-99
BLK. E	Board of County Commissioners, Portage County, Ohio	12-17-99
BLK. F	Board of County Commissioners, Portage County, Ohio	12-17-99
BLK. G	Board of County Commissioners, Portage County, Ohio	12-17-99



FILE NO. 1206400

12-064-00-00-000.000
FRANKLIN TWP.