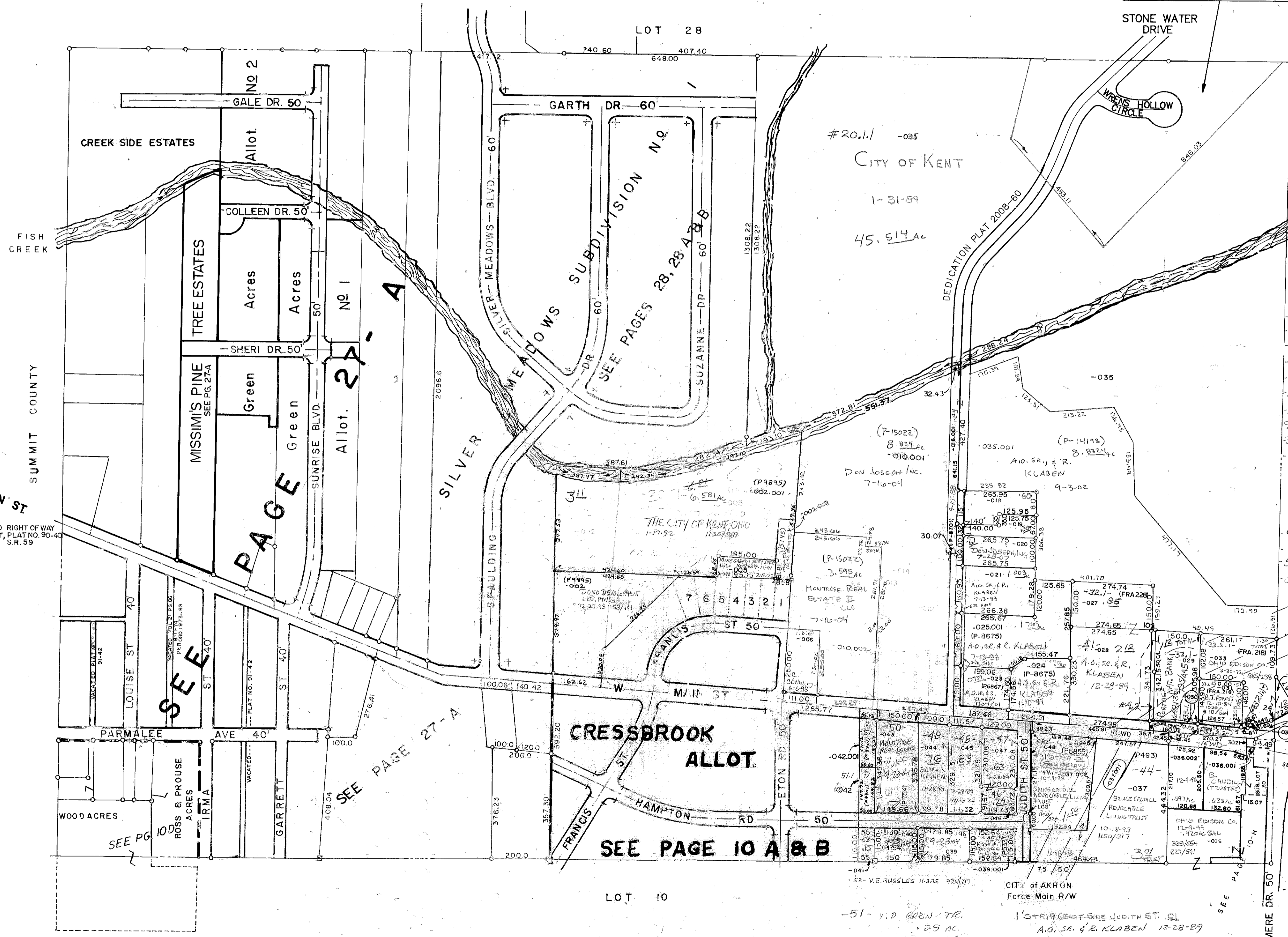


THE LAKES OF FRANKLIN MILLS
SUBDIVISION NO. 4
SEE MAP PAGE 27-B



- 20.2.1- City of Kent 7-15-88 .44
- 25.1- DON JOSEPH, INC. 8-178 957.113 .01
- 25- DON JOSEPH, INC. 3-20-89 .49
- 26.1- DON JOSEPH, INC. 11-23-88 (P-1192) .28
- 26.2- 27.1- DON JOSEPH, INC. 4-24-89 .01 & .01
- 32.2- FANELLI & LYMAN, INC. 11-20-89 788.534
- 33.2.2- (HWD) -33.2.1.1 -33.1.1 STATE OF OHIO
- 42-73 903.1120 .01 2-14-72 883.103 .01 4-19-73 888.991.14
- 37- FANELLI & LYMAN, INC. 11-28-72 874.721 .95
- 37.1-40 FANELLI & LYMAN, INC. 6-12-49 .45
- 42- PORTAGE NATIONAL BANK 12-7-61 731.530 795.415 1.12
- 43.1 (15WD) STATE OF OHIO 6-23-73
- 43.1-700.687 .31 (10WD) 7-7-75 921.67 .40
- 45- R. PELUMIS 1-8-79 962.771
- 45.1- KLABEN FORD INC. 12-18-86 1046.22 .40
- 56- KENT MOULD & MFG. CO. 1.60
- 58- 8-60- M. B. & K. BOWMAN .30 & .20

SEE CENTERLINE AND RIGHT OF WAY ESTABLISHMENT, PLAT NO. 90-40 6-20-90 S.R. 59

- CITY OF KENT 9-3-02 0.03Ac
- (P-1193) -021.001
- CITY OF KENT 9-3-02 0.04Ac
- (P-1193) -025.002
- CITY OF KENT 9-3-02 0.037Ac
- (P-1193) -023.001

- 51- V.D. ROBIN 77.25 AC
- 51.1 R.O. L.S. HINTZ 01-09-2003
- 1'S TRIP (EAST SIDE JUDITH ST.) A.O. S.R. & R. KLABEN 12-28-89