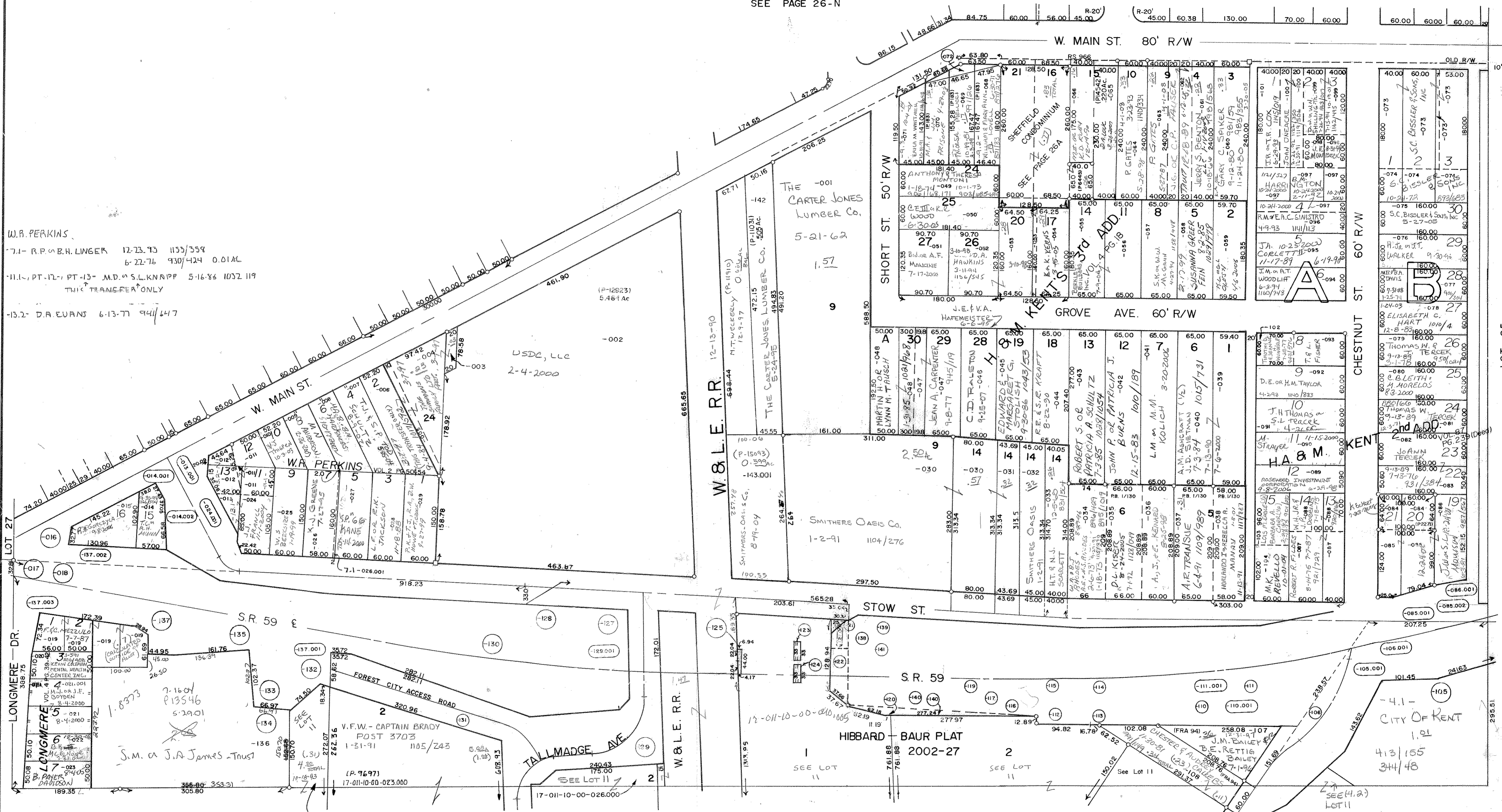


SEE PAGE 26-N



W.B. PERKINS
 7-1-R.P. B.H. LINGER 12-23-73 1153/359
 b-22-76 930/424 0.01AL
 11-1-PT-12-PT-13- M.D. S.L. KNAPP 5-16-86 1032/119
 THIS TRANSFER ONLY
 13-2-D.A. EVANS 6-13-77 941/147

THE CARTER JONES LUMBER CO.
 5-21-62
 1.57
 9
 W&L.E.R.R. 12-13-70
 488.44
 472.15
 494.83
 491.20
 (P-1031)
 0.5594 AC
 (P-12623)
 5.464 AC
 -002
 USDG, LLC
 2-4-2000

LOT 11
 -2-1- STATE OF OHIO 11-6-74 914/532 .01
 -33WD - STATE OF OHIO 7-3-73 900/1071 .01
 -33AWD - STATE OF OHIO 7-3-73 900/1069 .01
 -33BWD - STATE OF OHIO 7-3-73 900/1067 .01

17-026-20-00-000.000
 KENT CITY
 SCALE: 1"=100'

26 SOUTH PART

HA 9M. KENT 2nd ADD.
 N. 64' OF S.L. 20+21. BLK B - X. EX. 10-13-2008