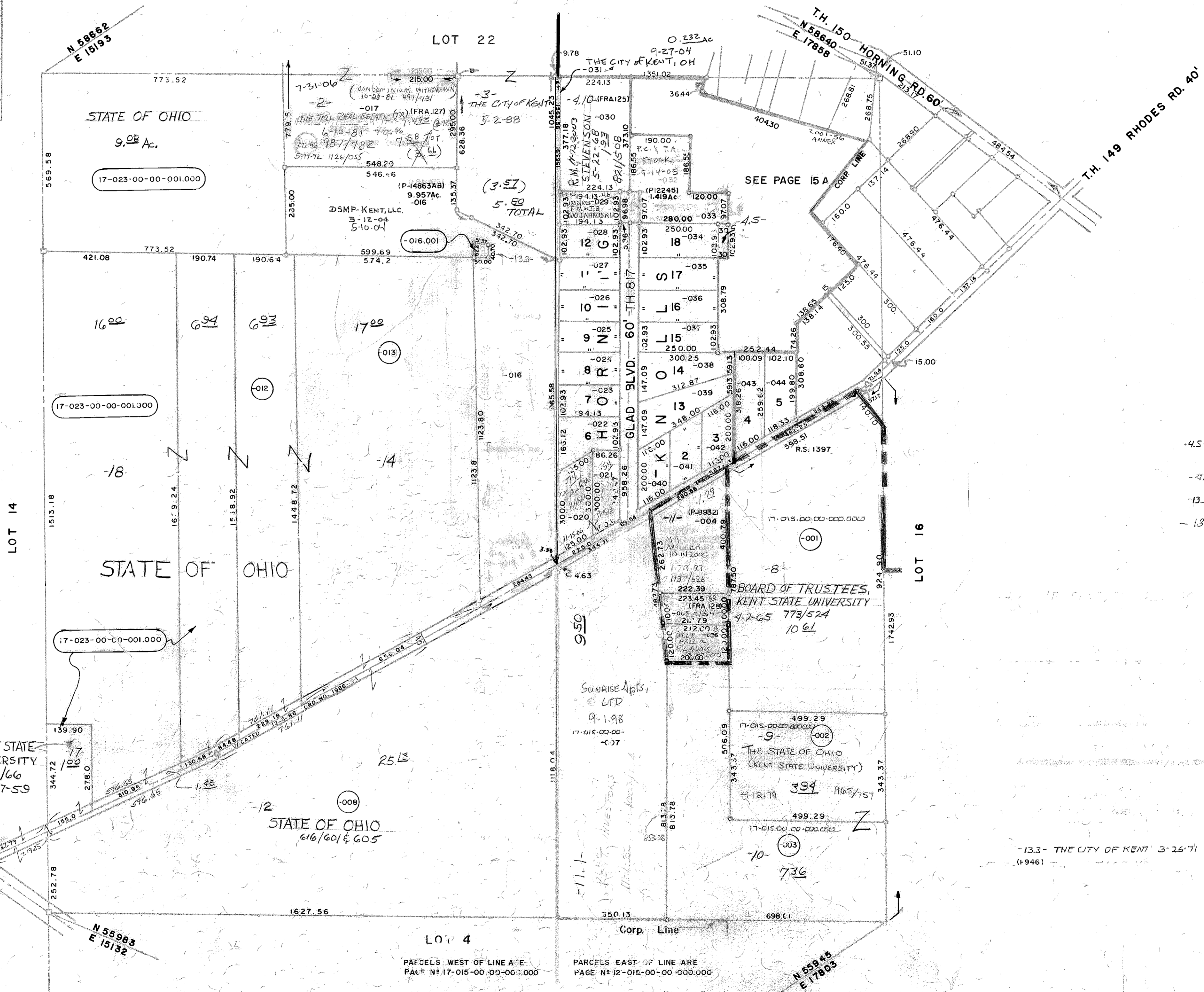


LOT	NAME	VOL / PG.
1	A.S. MONTZ II	9-28-2001
2	J.S. KACZALA	9-28-2001
3		9-28-2001
4	B.B. or V.D. ANDERSON	8-13-98
5		(LOT 5 RESUBDIVIDED) VOL.19 PG.12
6	JOHN M. & RITA M. KUJAR	5-18-81
7	M.R. SHARP	12-16-2002
8	C.J. GIERKE or S.E. POLING	4-25-2008
9	S.P. or S.R. BORTNER	7-8-02
10	STEPHEN A. & BETTY L. MARO	4-28-82
11	Y. EVA	6-15-2001
12	H.L. & E.E. ADAMS	6-30-2004
13	S.G. or J.D. NEILL	8-18-00
14	J.C. RUTH	6-30-2005
15	C.S. BAXTER, JR	2-17-2006
16	T.J. WENT or B.D. THOMAS	5-8-2005
17	G.M. DILLZ JR. Rev Living Trust	6-18-03
18	R.B. GREGORY & L. LUMEAU	12-23-92



or 7-21-03  
 -4.5-R.B. GREGORY + L. LUMEAU .07AC  
 12-23-92 1136/154  
 -4.7-THE CITY OF KENT 732.198 .25  
 -13.3-  
 -13.4-M.W. BALL 2-25-2001  
 E.L. ADDIS 9-19-2002  
 4-27-2007  
 6-11-2007

-13.3- THE CITY OF KENT 3-26-71 866/248 .052ac  
 (1946)

LOT 4  
 PARCELS WEST OF LINE ARE  
 PAGE # 17-015-00-00-000.000  
 PARCELS EAST OF LINE ARE  
 PAGE # 12-015-00-00-000.000

12-015-00-00-000.000  
 17-015-00-00-000.000  
 CITY OF KENT  
 FRANKLIN TWP.  
 SCALE: 1" = 200'