

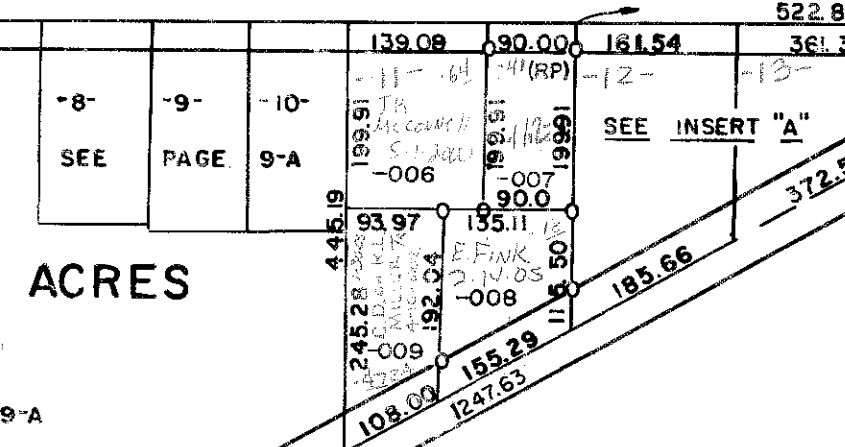
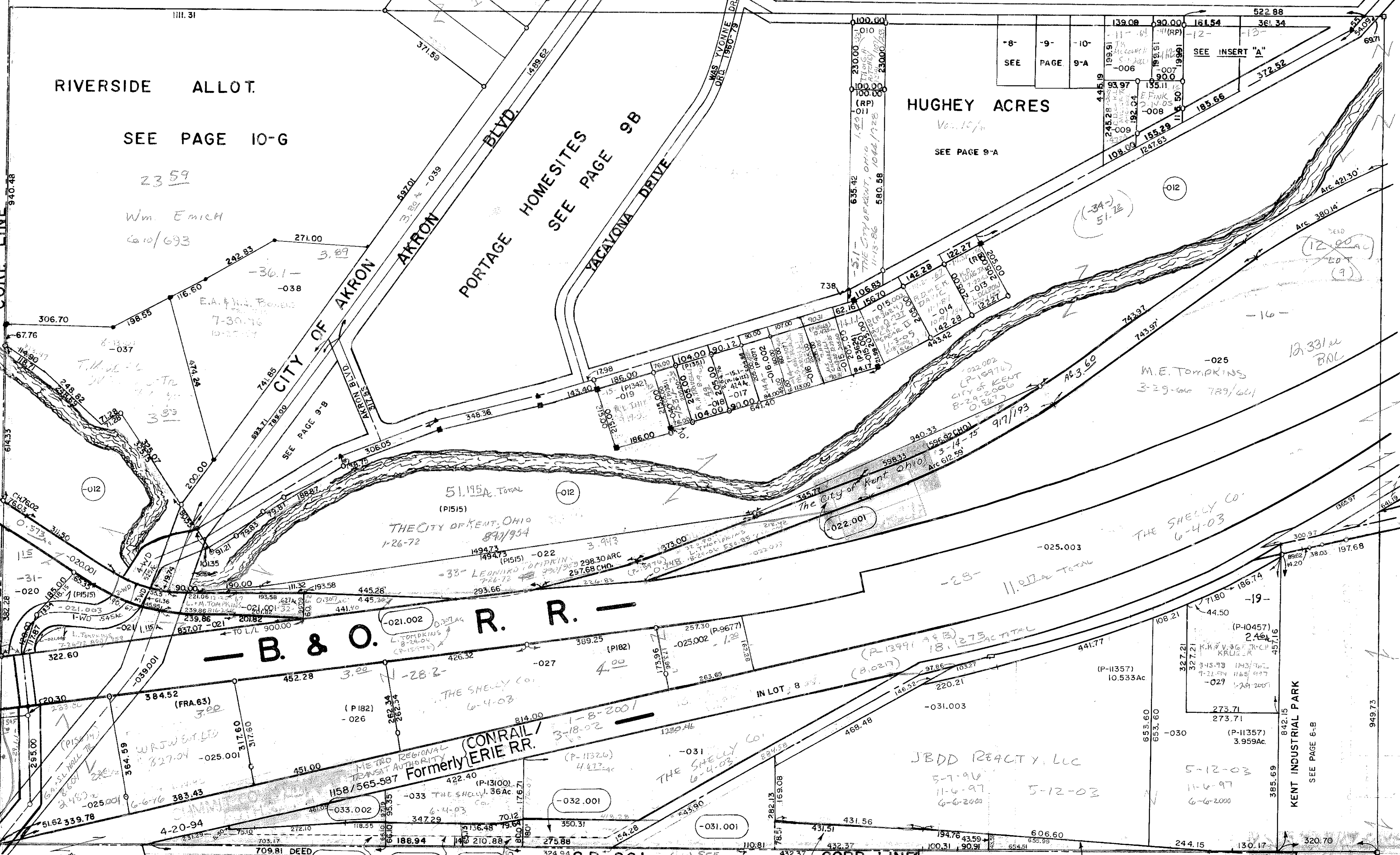
MONROE FALLS-KENT RD.  
T.H. 139 60' R/W

INSERT "A"  
SCALE 1"=100'

N 56180  
E 367

LOT 10

MIDDLEBURY 60' R/W  
N 56106  
E 4403



LOT 8  
17-009-10-00-039  
S.R. 261  
CHERRY ST.  
60' R/W  
OVERHOLT RD.  
60' R/W

- 021.003 1-WD CITY OF KENT 2-20-01 255AC
- 021.004 3-WD CITY OF KENT 2-20-01 255AC
- 021.001 4-WD CITY OF KENT 2-20-01 255AC
- 021.005 CITY OF KENT 2-20-01 255AC
- 020.002 2-WD PORTAGE COUNTY, STATE OF OHIO 7-31-2008 .057 AC

- 29.1.1- THE CITY OF KENT 5-9-2008 0.258 AC
- 29.1.024 BAL. 0.202
- 29.1.025 BAL. 0.202

- 12.1-S R BOYLES 5-20-2002 .25
- 14.1-M.S. ORA CIRCUMELLI JR TRUST 2-5-93 3-3-93 11-27-95 .42
- 14.4-R.W. JR & N.R. JOHNS 4-12-97 .36
- 15.1-J.A. LUKASIK 2-2-07 .424 AC
- 15.3-1 RALPH R. KOERMER 10-4-78 9-5-10-74 .36
- 18.2-DY. S.L. & S. CHEUNG 1-31-01 10-1-01 .62
- 29-1-A.H. ACKEN JR 10-12-79 9-6-85 .10 Tracts 2/7/02
- 29.1-THE CARTER JONES LUMBER CO 10-19-67
- 31-A.H. JR & M.L. ACKEN 1-30-98 TRACT 2/7/02
- 32-26.1-L.M. TOMPKINS 12-20-61 8-14-25-66
- 33-1-W.J. R. HANBOWSKI 6-3-2003 .04
- 38-THE CITY OF KENT OHIO 3-14-75 7-17-83 .31

S.R. 261  
CHERRY ST.  
60' R/W

BRIMFIELD TWP  
LOTS 1 & 2