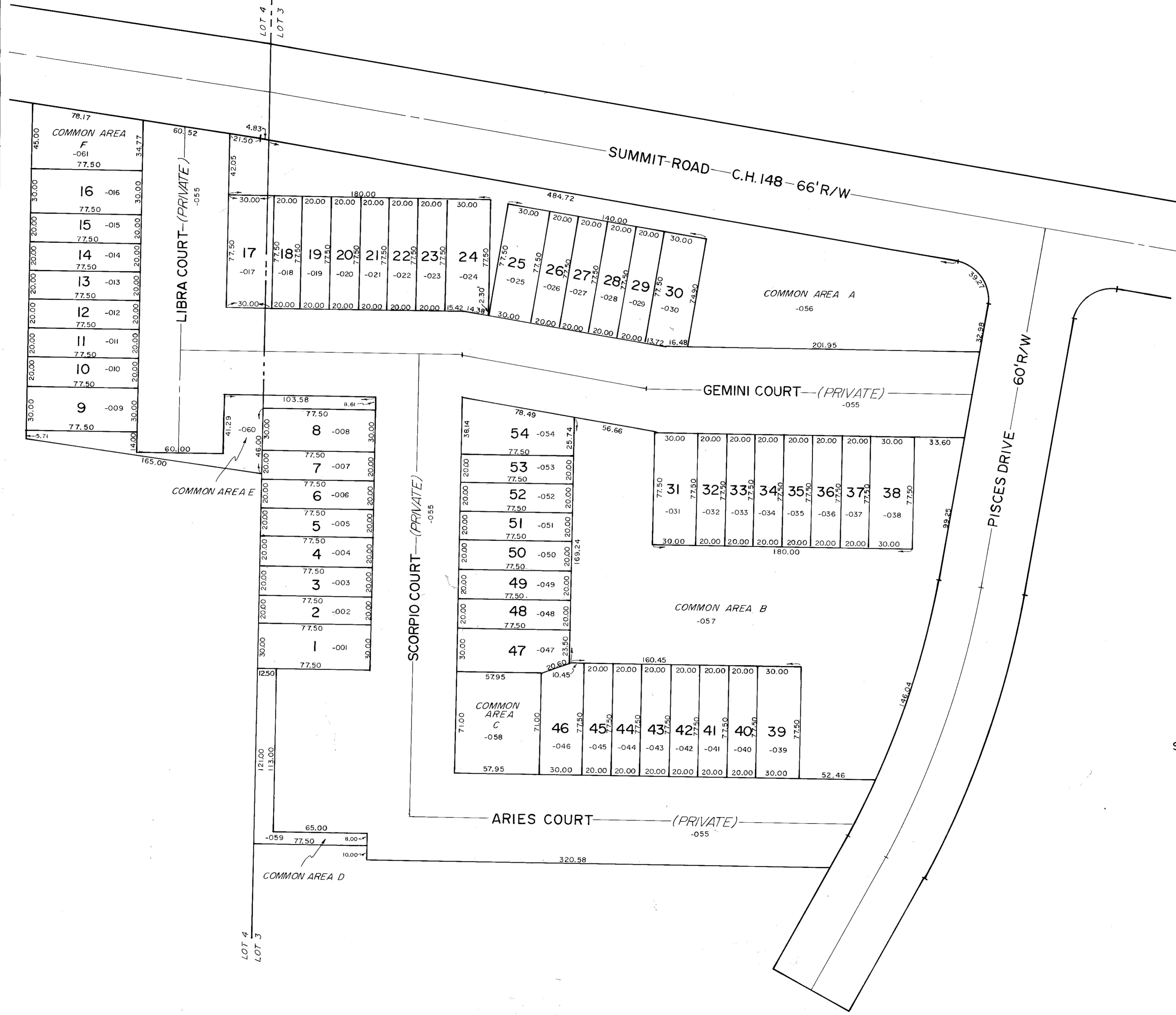


# UNIVERSITY TOWNHOMES SUBDIVISION PHASE I PLAT NO. 89-30

NO.	NAME	VOL./PG.
1	Olympus Suites LLC	10-26-2007
2	D.S. or B.L. VARGO	4-4-2007
3	CHARLES or BETTY YAO LIM	11-14-91 1117/917
4	MANNING PROPERTIES LTD	11-10-2005 5-28-2004 4-30-2001
5	Delarosa Prop LLC	8-14-06 1-10-03
6	D.S. + B.L. VARGO	6-6-03
7	B.A. TIEDMAN	12-23-04
8	T. HAYS	6-2-2004
9	MANNING PROPERTIES II	11-10-2005
10	MANNING PROPERTIES LTD	11-10-2005 1090/20 1161/933 12-04-04
11	M.A. II or S.M. FRIESS	3-27-2000
12	D.J. or J.E. FESS	4-29-04
13	D.S. or B.L. VARGO	3-31-05
14	MANNING PROPERTIES LTD	11-10-2005
15	T. HAYS	6-2-2004
16	T.A. HAYS	7-7-03
17	MANNING PROPERTIES LTD	12-26-06
18	R.M. or B.M. MASSUCCI	7-24-2002 6-21-90
19	MANNING PROPERTIES LTD II	8-21-08
20	Delarosa Property LLC	8-14-2006 10-11-2000
21	MANNING Prop. LTD II	10-8-2008
22	T.P. MANNING	1-22-2007
23	MAHARAMAS PROPERTY GROUP LLC	6-28-2007 7-17-06
24	D.S. or B.L. VARGO	1-3-2005
25	MANNING PROPERTIES LTD II	11-10-2005 3-31-08 5-29-98
26	JAMES L. CASTO	7-10-2002
27	MAHARAMAS PROPERTY GROUP LLC	6-26-2006 5-03-2001
28	DA or S.M. DELROSA	8-15-1807
29	J.R. or M. WOLFE	10-19-2004
30	J.E. KREMER	12-27-00 4-22-96
31	D.P. JERINA	7-27-2006
32	J.E. or D.J. FESS	8-20-2006
33	MANNING PROPERTIES LTD	11-10-2005 8-16-2002
34	MANNING PROPERTIES LTD II	10-8-08
35	Delarosa Property LLC	8-14-2006 6-30-2006
36	D.E. VARGO	6-3-97
37	C.E. or M.H. TIPTON	7-27-95
38	Delarosa Prop. LLC	8-14-06 12-02-05
39	MANNING PROPERTIES LTD II	11-10-2005
40	MANNING PROPERTIES LTD	11-10-2005 8-31-98
41	J.L. CASTO	8-23-2007
42	J.P. MANNING III	6-17-07
43	MANNING PROPERTIES LTD II	11-10-2005 5-31-2005
44	MANNING PROPERTIES LTD II	11-10-2005 10-31-02
45	MAHARAMAS PROPERTY GROUP, LLC	11-10-2005 1090/18 6-26-2006
46	MANNING PROPERTIES LTD II	11-10-2005 10-31-02
47	C. or T.P. MANNING	7-30-99 3-14-03
48	Delarosa Property LLC	8-14-2006 6-30-2006
49	Olympus Suites LLC	10-26-2007
50	D.S. + D.E. VARGO	2-10-99
51	MANNING PROPERTIES LTD	8-03-2005
52	C. or B.V. LIM	8-10-98
53	D.P. JERINA	5-31-07
54	MANNING Prop. LTD	10-9-2005
(OWNER OF COMMON AREAS AND PRIVATE STREETS) UNIVERSITY TOWNHOMES HOMEOWNERS ASSOCIATION, INC. 1-23-90		



SCALE 1" = 40'

17-003-10-00-000.000

CITY OF KENT  
FRANKLIN TWP.

**3A**