

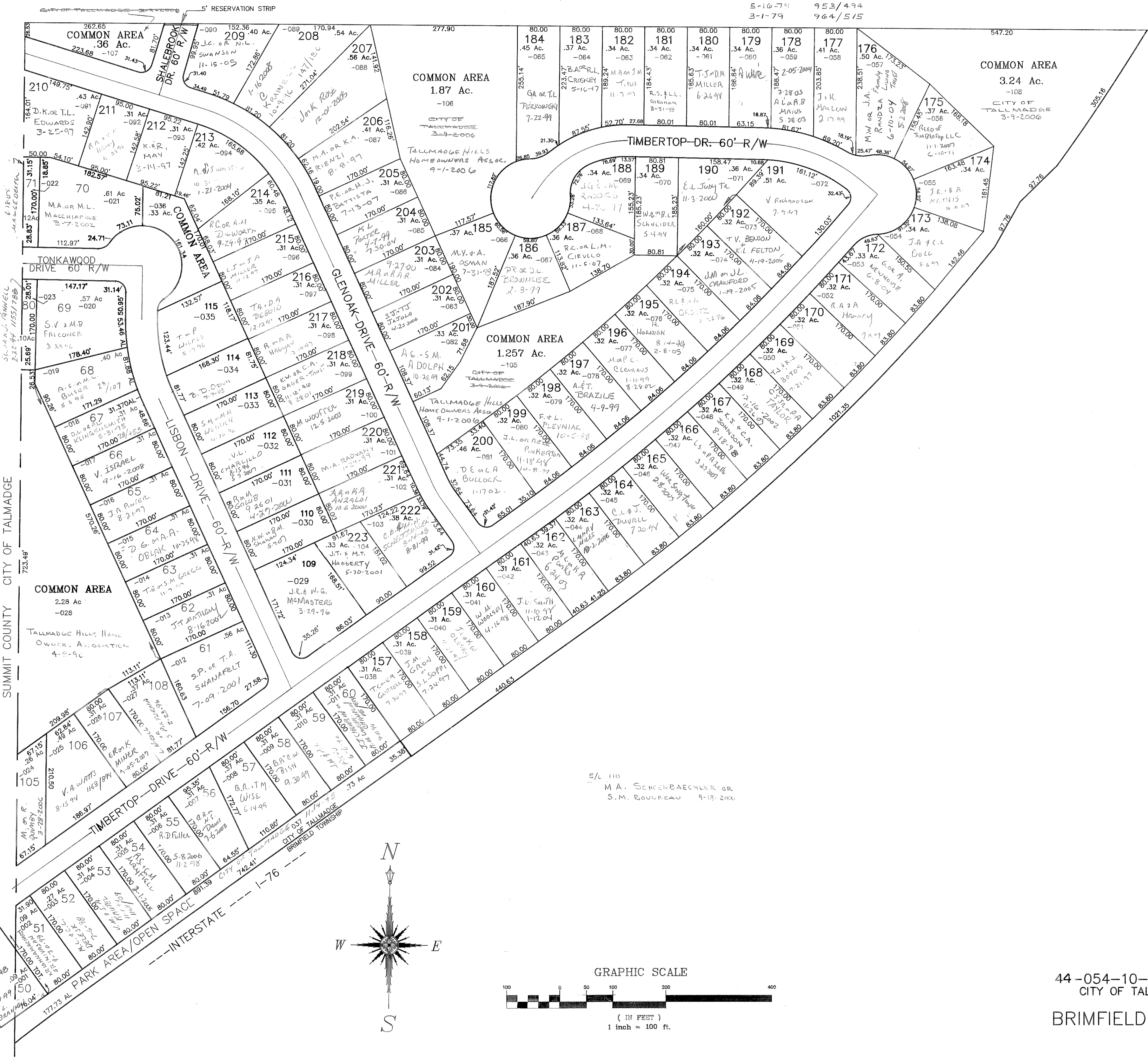
TALLMADGE HILLS

PHASE I LOCATED IN SUMMIT COUNTY ONLY
 PHASE II PLAT 94-1 S/L 50-108
 PHASE III PLAT 94-61 S/L 109-115
 PHASE IV PLAT 96-76 S/L 157-223

OWNER OF UNGULDED LOTS: W.G. LUKHART REALTY CORP.

5-16-74 953/494
 3-1-79 964/515

TALLMADGE HILLS HOMEOWNERS ASSOC.
 9-1-2006



44-054-10-00-000.000
 CITY OF TALLMADGE

BRIMFIELD TWP. 54-A