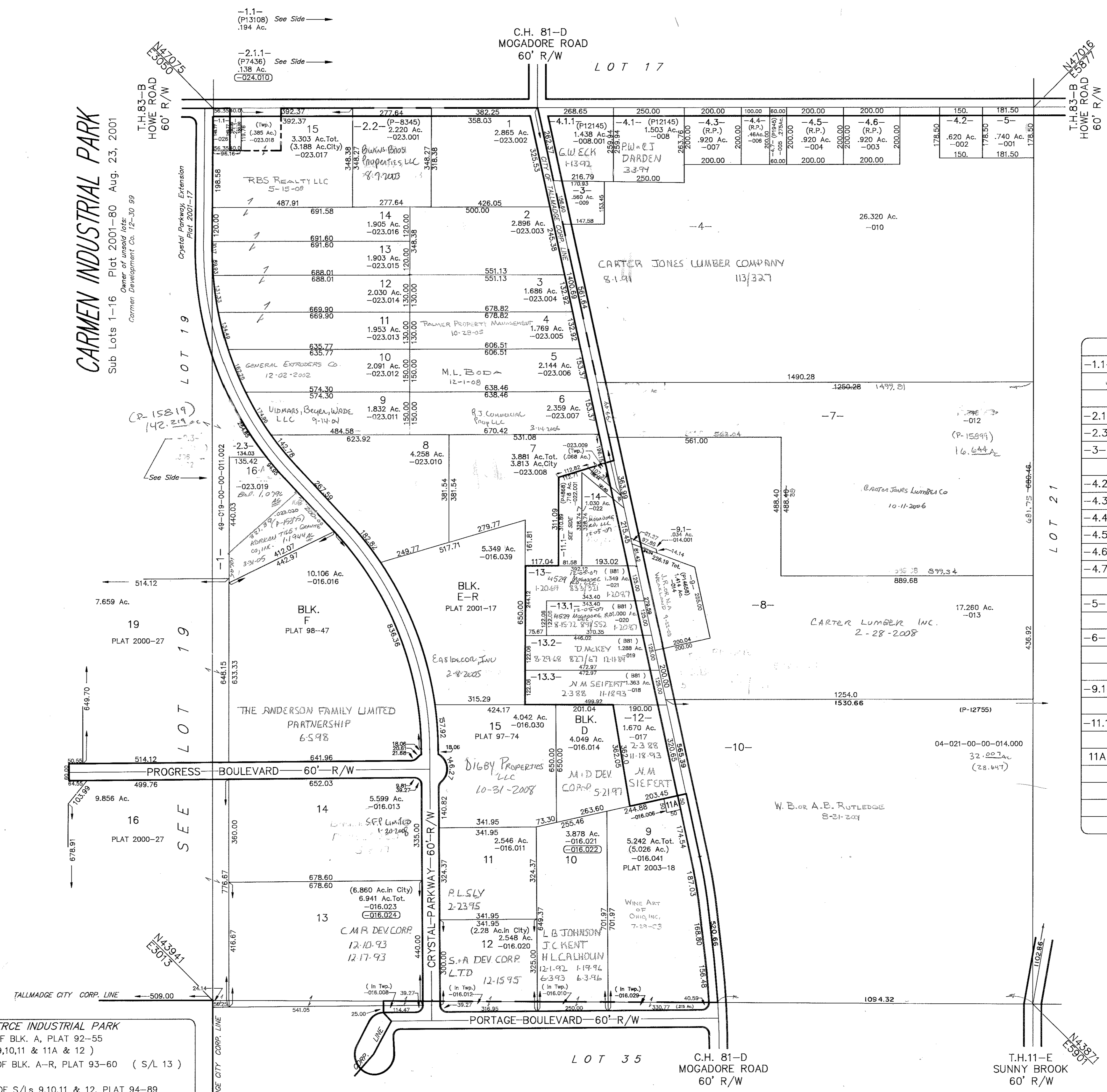
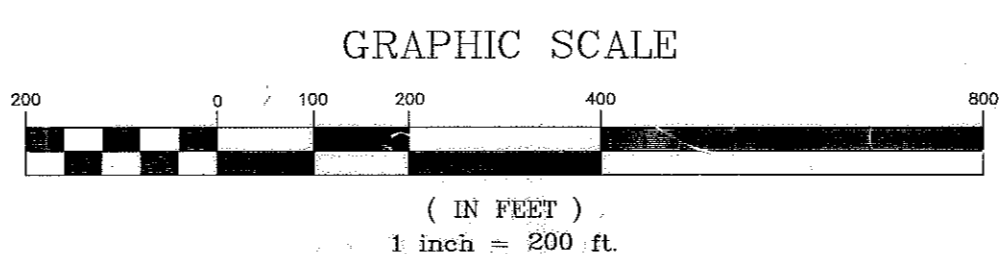


CARMEN INDUSTRIAL PARK

Sub Lots 1-16 Plat 2001-80 Aug. 23, 2001
Owner of unsold lots:
Carmen Development Co. 12-30-99



THE COMMERCE INDUSTRIAL PARK
PHASE II & REPLAT OF BLK. A, PLAT 92-55
(BLK. A-R & S/Ls 9,10,11 & 11A & 12)
PHASE III & REPLAT OF BLK. A-R, PLAT 93-60 (S/L 13)
(S/L 13)
PHASE IV & REPLAT OF S/Ls 9,10,11 & 12, PLAT 94-89
(BLKS. D,E,F, & G, & S/Ls 9,10,11,12, & 14)
PHASE V PLAT 2000-5 (RE-RECORDED, PLAT 2000-27)
(S/Ls 16,17,18,19, & PROGRESS BLVD.)



1.1	THE PORTAGE COUNTY COMMISSIONERS	RES# 00 524
2.1.1	THE BOARD OF COMMISSIONERS, PORTAGE COUNTY	RES# 84
2.3	PL. JR. & J. RHODES	6-19-2000 7-17-06
3	D.A. JENKINS	7-6-99
4.2	D.E. & K.J. TITKO	4-24-89
4.3	A.B. PANTALONE	12-17-2004
4.4	M.J. GONCY	12-6-2000
4.5	D.V. & J.A. KUNKR	5-20-68 8/21/453
4.6	G. HULTGREN	5-28-04
4.7	M.J. GONCY	12-6-2000
5	D.L. & K.J. TITKO	4-24-89
6	B.M. PHILIPS	7-9-87 7-19-88
9.1	CARTER LUMBER INC.	2-28-2008
11.1	Mossadock & Co. LLC	7-13-77 1-20-87
11A	PORTAGE COUNTY BOARD OF COMMISSIONERS	3-6-96

CITY OF TALLMADGE
49-020-00-00-000.000
04-020-00-00-000.000
BRIMFIELD TWP.