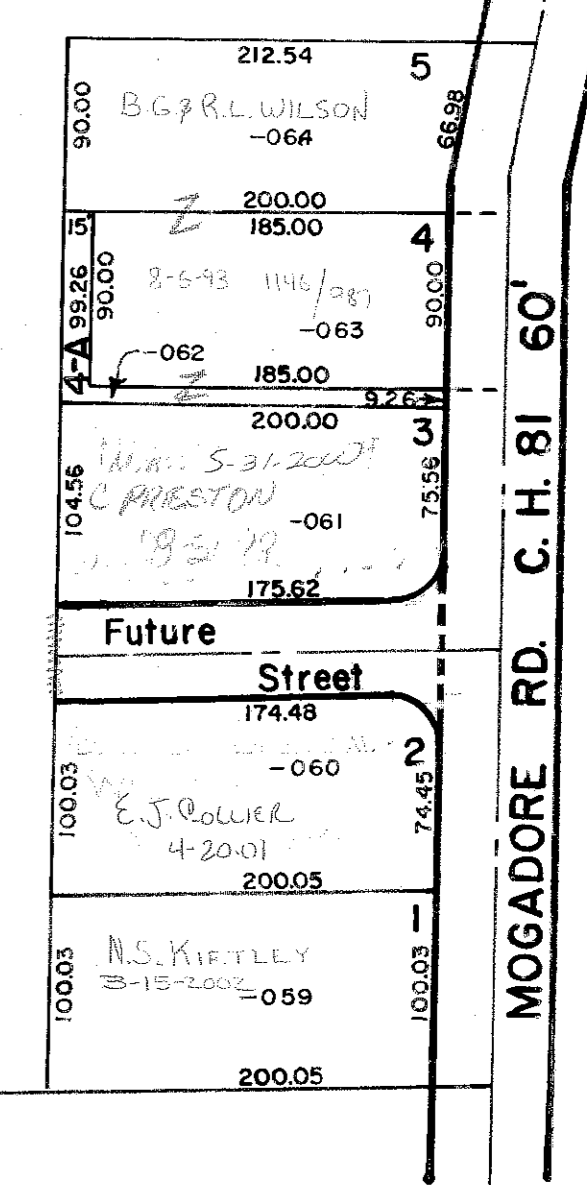


Match Point

OAKWOOD ACRES VOL. 11 PG. 16

H.W. & S. ATWOOD - OWNERS



MOGADORE RD. C.H. 81 60'

MOGADORE ROAD C.H. 81 60'

N. 85° 44' W (B.M. 7) HOWE 60' T.H. 83 RD.

NOTE: House numbers indicated by *slanted* figures
Example: 41/53