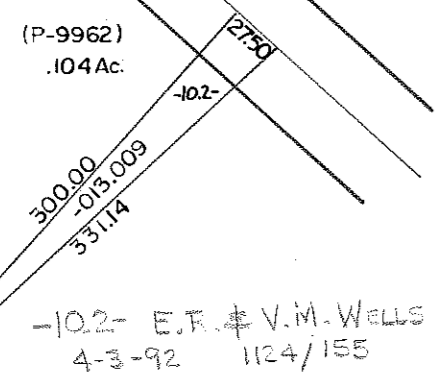


T.H. 91-B  
SHERMAN  
R/W 60'

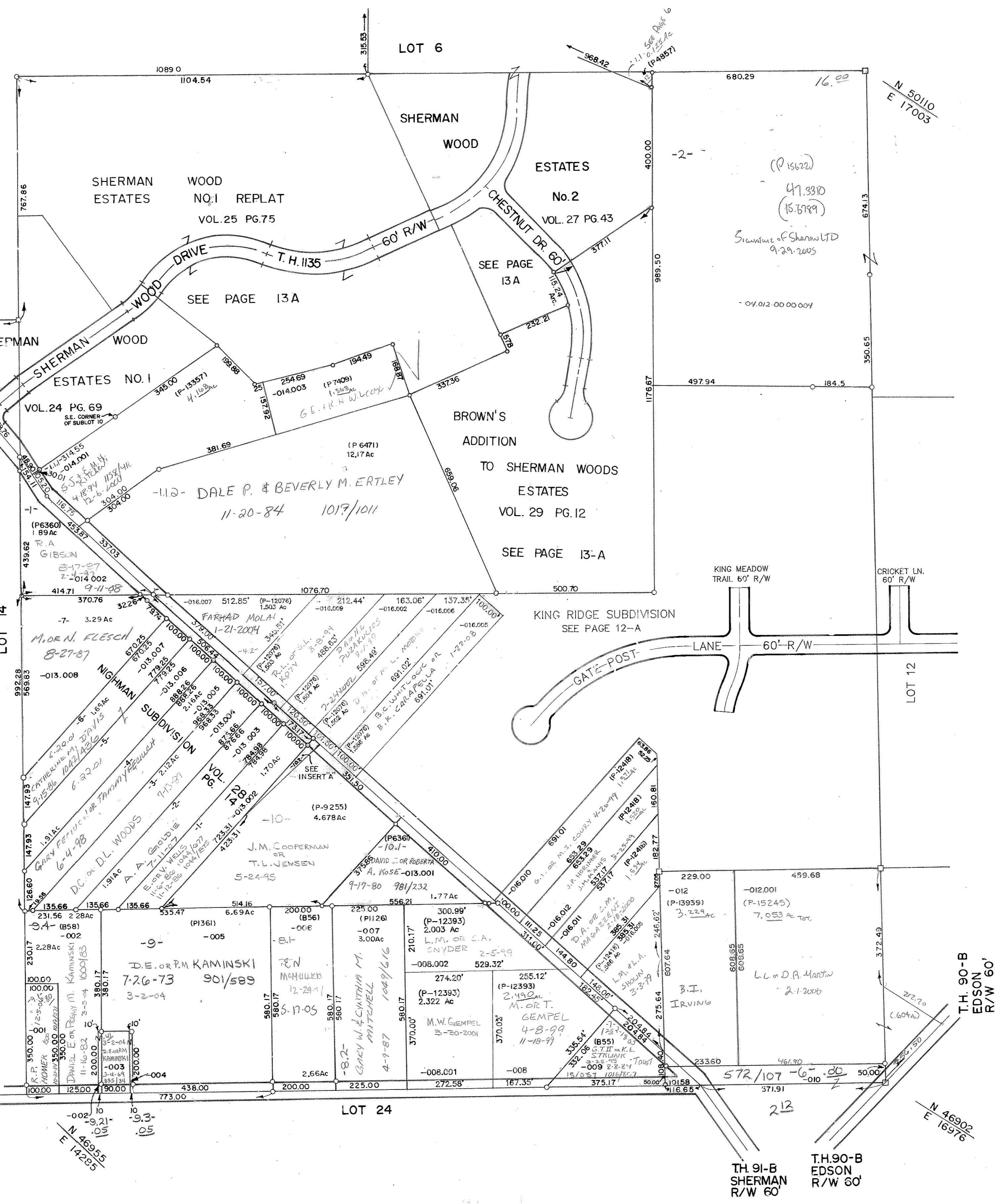
NIGHMAN SUBDIVISION  
OWNERS VACANT LOTS  
RICHARD CURTIS LUDICK 1/4, KAREN LUDICK 1/4,  
DORRILL L. ARMENT 1/4, ROSEANN ARMENT 1/4

INSERT "A"



-6- CHAD EDISON 02 572/107 .80  
-9-21- D.E. PM. KAMINSKI 11-16-82 1000/83 .05  
-9-3- DE KAMINSKI 3-4-89 835/84 .05

T.H. 83-D  
HOWE RD.  
R/W 60'



T.H. 91-B  
SHERMAN  
R/W 60'

T.H. 90-B  
EDSON  
R/W 60'

T.H. 90-B  
EDSON  
R/W 60'