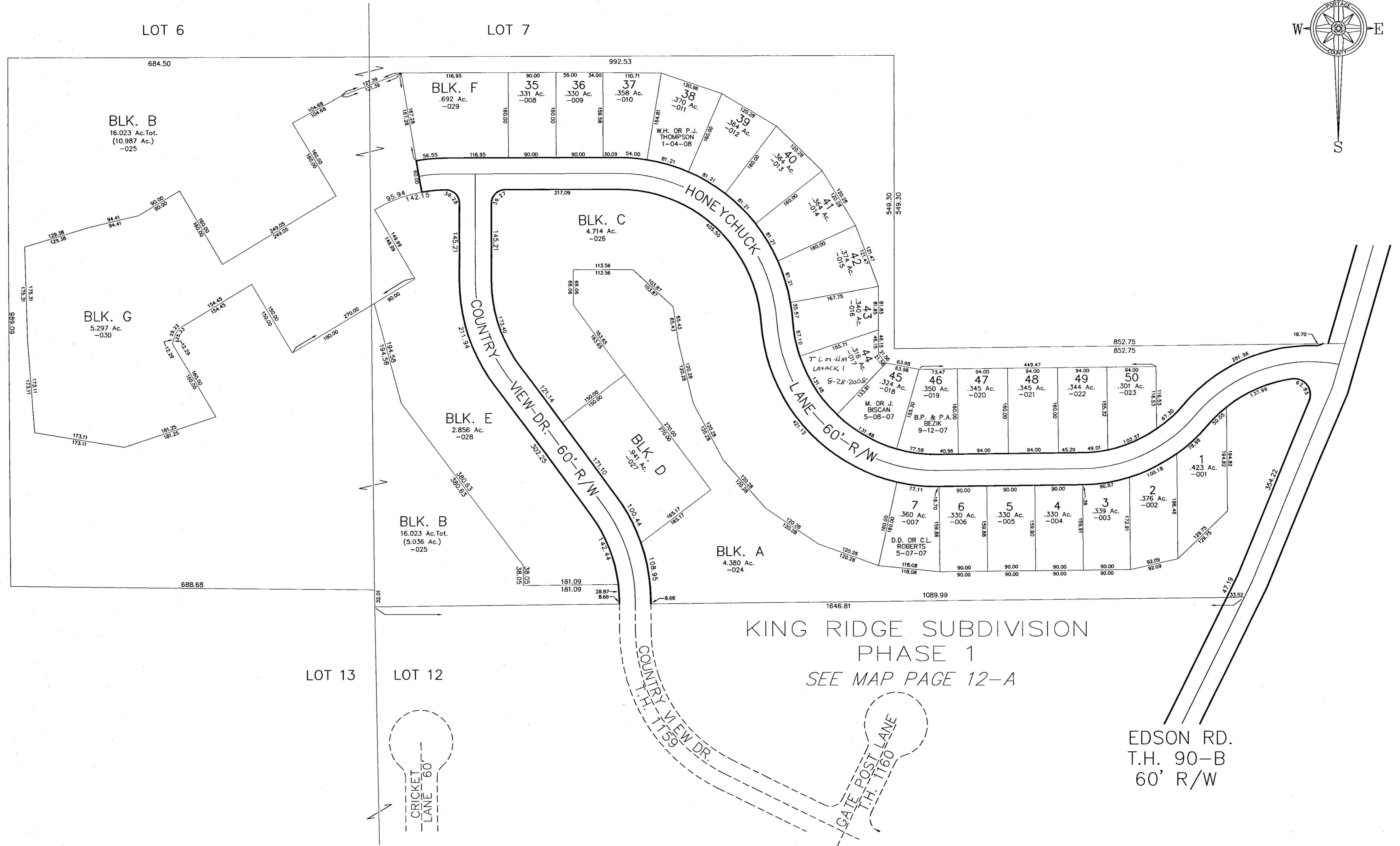
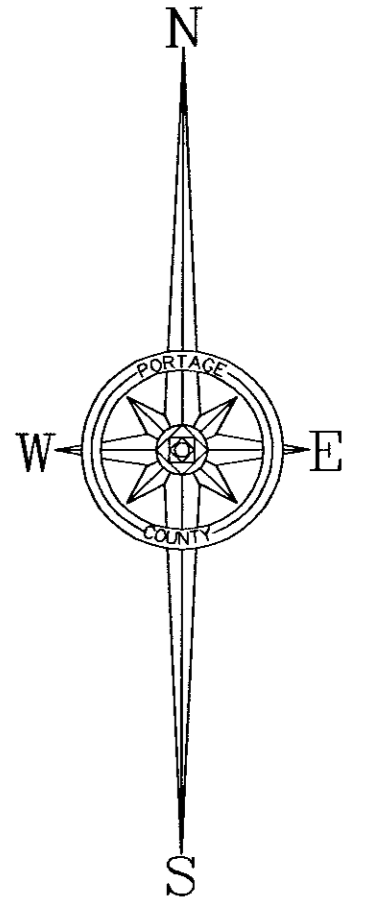


COUNTRY VIEW ESTATES SUBDIVISION

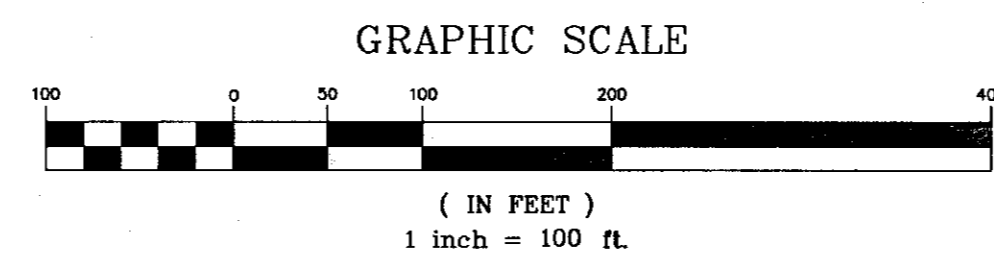
12-B

PHASE 1 S/L 1-7, 35-50, BLOCKS A,B,C,D,E,F, & G PLAT 2006-89 10-18-06

OWNER OF UNSOLD LOTS: SIGNATURE OF SHARON, LTD. 9-29-05



FILE NO. 0401220



04-012-20-00-000.000
BRIMFIELD TWP.

12-B