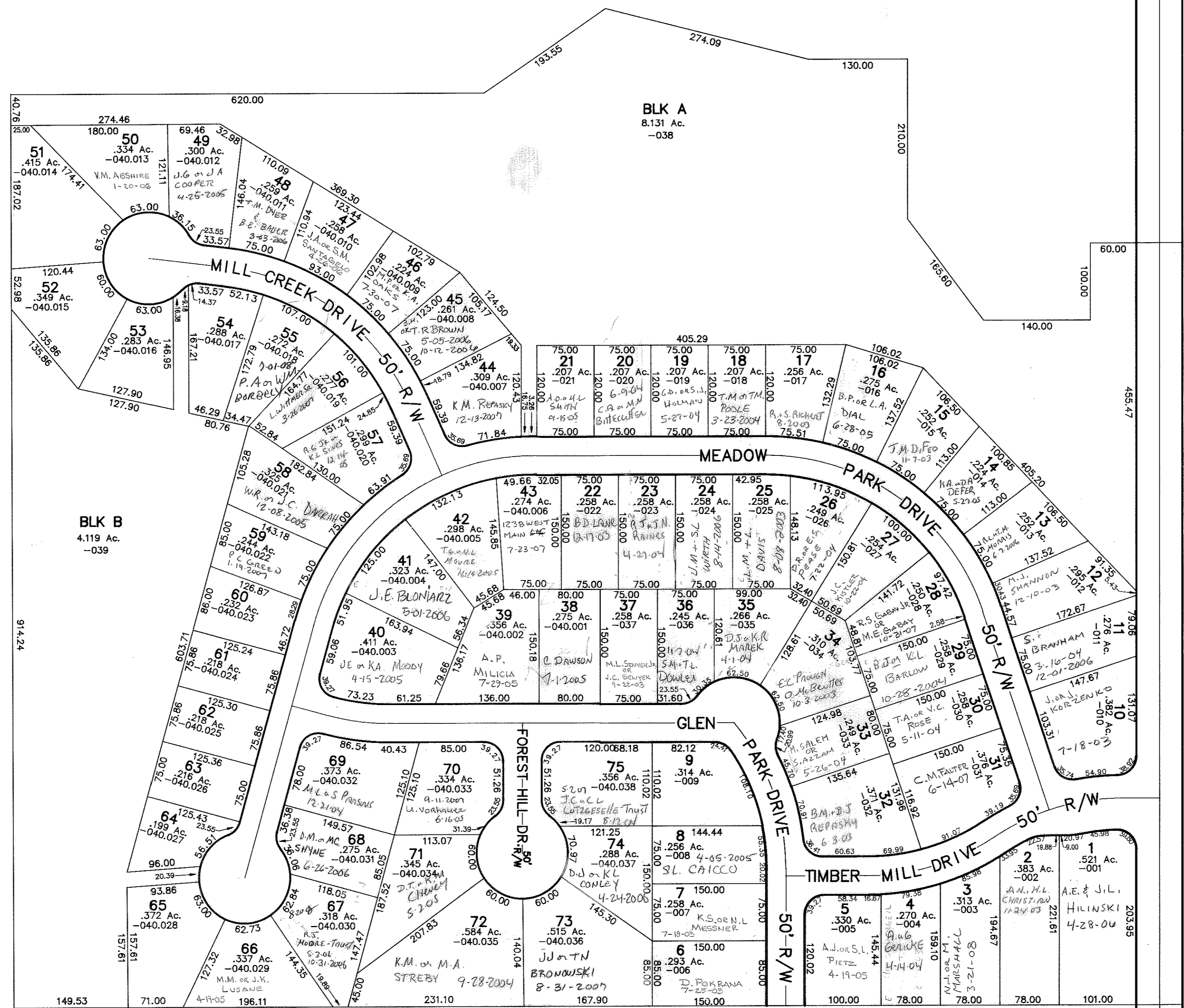


THE ESTATES AT MARSH LANDING

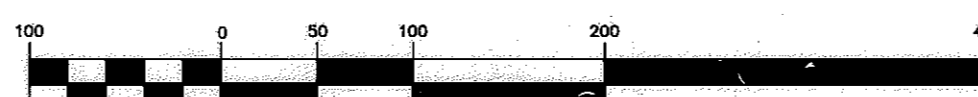
PHASE 1, LOTS 1-37 & BLKS A,B,& C PLAT 2002-92 1-25-2002
PHASE 2, LOTS 38-75 PLAT 2004-36 5-20-2004

OWNER OF UNSOLD LOTS:
Alpine Designs, Inc.
10-23-2000
11-18-2001
5-6-2002



POWDER MILL ROAD T.H. 98-A 60' R/W

GRAPHIC SCALE



(IN FEET)
1 inch = 100 ft.

04-009-10-00-000.000
BRIMFIELD TWP.

9A