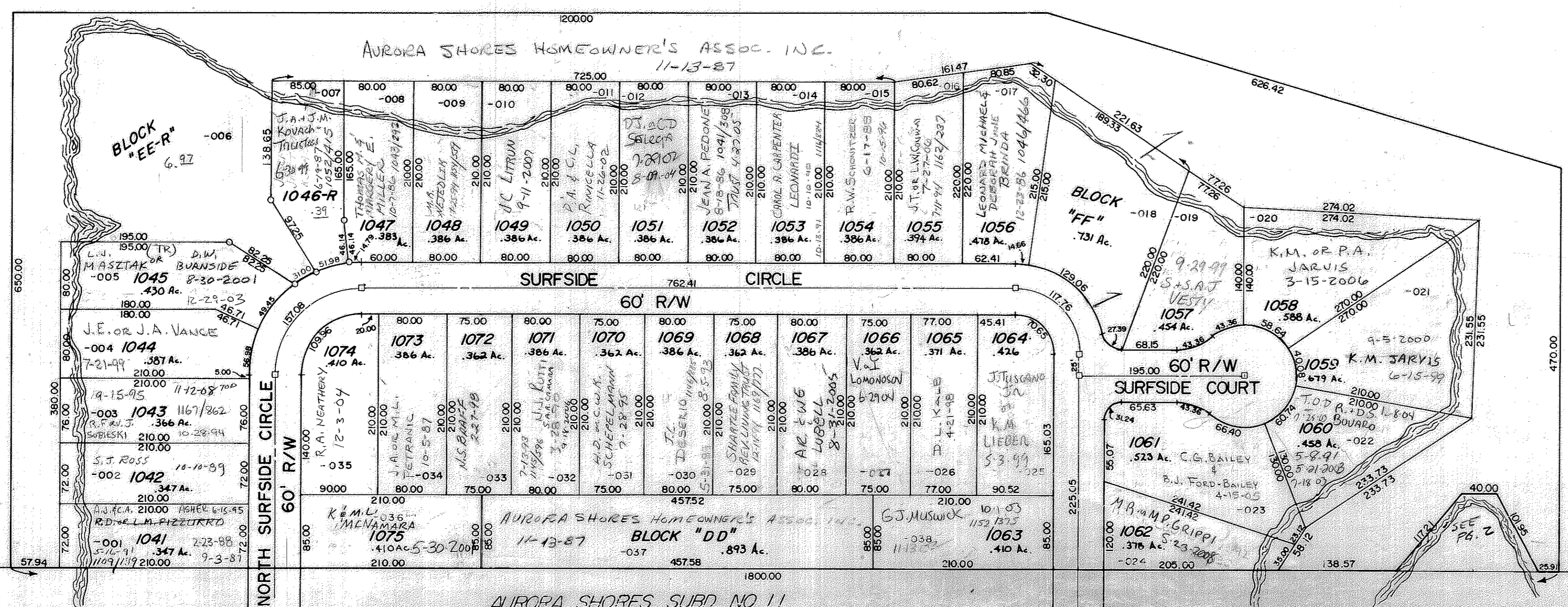




AURORA SHORES HAWTHORN SUBDIVISION NO. 12 VOL. 31, PG. 16-18

OWNER OF VACANT LOTS: BROADVIEW SERVICE CORPORATION 1015995 7-12-84
REPLAT OF S/L 1046 & BLOCK "EE" VOL. 34, PG. 25

AURORA SHORES SUBD. NO. 4



PORTAGE COUNTY
SUMMIT COUNTY

03-002-20-00-000.000

AURORA CITY
SCALE 1" = 100'

2-B