

AURORA SHORES
HAWTHORN SUB. 12
VOL. 31, PG. 16
SEE PG. 2-B
25.410 Ac.

L1
282.954 Ac. Tot.
-042

Aurora Lake Association, Inc.
7-25-00

(P-8172)
457.185 Ac. Tot.
03-009-00-00-008.000

Hawthorn of Aurora Limited Partnership
2-11-87

HAWTHORN OF AURORA
LAKE RECREATION AREA
PLAT 2000-21 4-5-2000
LOTS L1 & L2

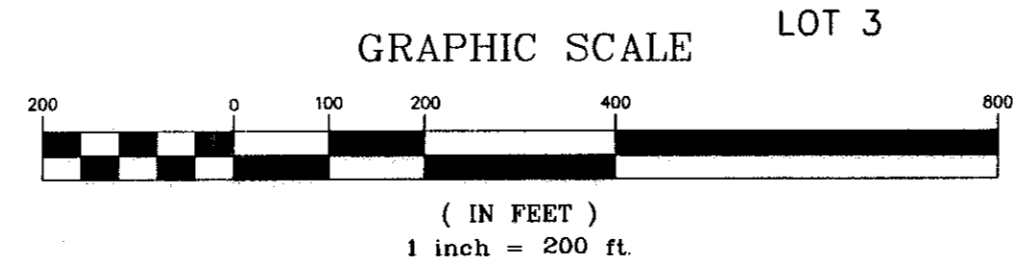
HAWTHORN SUBDIVISION PHASE 1
SUBLOTS 1-77 PLAT 90-6
03-009-00-00-000.000
FOR OWNERS SEE PG. 9-A

HAWTHORN SUB. PHASE 2
PLAT 94-92 SEE 9-A

HAWTHORN SUB. PHASE 3
PLAT 98-61 SUB LOTS 140-177
RE-RECORDING
SUB LOTS 140-177
PLAT 99-27

M.A. Clark
6-24-05
-1.4-
(P-4374)
006.004
120 Ac.
M. or T. Ouellette
12-7-01
-006.003
(P-4374)
-1.3-

J.C. & J.W. Phillips, Trustees
3-25-91
-006.002
-1.1-
-006.001
-1.2-
R.J. DeBacco
11-8-02



03-002-00-00-000.000
AURORA CITY